

RHB Islamic Bank Berhad
Basel II Pillar 3 Disclosures
31 December 2023

RHB ISLAMIC BANK
BASEL II PILLAR 3 DISCLOSURES AS AT 31 DECEMBER 2023

CONTENTS		Page(s)
List of Tables		ii
Statement by Managing Director		iii
1.0	Introduction	1
2.0	Scope of Application	2
3.0	Capital Management	3
3.1	Internal Capital Adequacy Assessment Process (ICAAP)	4
3.2	Basel III Implementation	4
3.3	Capital Adequacy Ratios	5
3.4	Minimum Capital Requirements and Risk-Weighted Assets (RWA)	6
4.0	Capital Structure	7
5.0	Risk Management	8
6.0	Credit Risk	11
6.1	Credit Risk Management Oversight and Organisation	11
6.2	Credit Risk Management Approach	12
6.3	Credit Monitoring and Annual Reviews	13
6.4	Off-Balance Sheet Exposures and Counterparty Credit Risk (CCR)	14
6.5	Credit Exposures and Risk-Weighted Assets By Portfolio and Approaches	14
6.6	Use of External Ratings	24
6.7	Internal Credit Rating Models	27
6.8	Impairment Allowances for Financing	39
7.0	Market Risk	44
8.0	Liquidity Risk	46
9.0	Rate of Return Risk in the Banking Book	47
10.0	Operational Risk	49
11.0	Shariah Non-Compliance Risk and Governance	52
12.0	Investment Account	54
13.0	Country Cross-Border Risk	56
14.0	Reputational Risk	56
15.0	Forward Looking Statements	56

RHB ISLAMIC BANK
BASEL II PILLAR 3 DISCLOSURES AS AT 31 DECEMBER 2023

List of Tables

Table No	Description	Page(s)
Table 1	Capital Adequacy Ratios	5
Table 2	Risk-Weighted Assets (RWA) by Risk Types	6
Table 3	Risk-Weighted Assets by Risk Types and Minimum Capital Requirements	6
Table 4	Capital Structure	7
Tables 5a & 5b	Summary of Credit Exposures with Credit Risk Mitigation (CRM) by Asset Class and Minimum Capital Requirements (On and Off-Balance Sheet Exposures)	15
Tables 6a & 6b	Exposures on Off-Balance Sheet and Counterparty Credit Risk (Before Credit Risk Mitigation)	17
Tables 7a & 7b	Credit Risk Exposures (Before Credit Risk Mitigation) by Industry Sector	19
Tables 8a & 8b	Credit Risk Exposures (Before Credit Risk Mitigation) by Remaining Maturity	21
Tables 9a & 9b	Portfolios under the Standardised Approach by Risk Weights	23
Tables 10a & 10b	Rated Exposures According to Ratings by External Credit Assessment Institutions (ECAIs)	25
Tables 11a & 11b	Exposures Subject to the Supervisory Risk Weights under the IRB Approach	29
Tables 12a & 12b	Exposures under the IRB Approach by PD Band, Exposure Weighted Average Loss Given Default (LGD) and Exposure Weighted Average Risk Weights	30
Tables 13a & 13b	Exposures under the A-IRB Approach by EL Range and Exposure Weighted Average Risk Weights	32
Table 14	Exposures under IRB Approach by Actual Losses versus Expected Losses	34
Tables 15a & 15b	Credit Risk Mitigation of Portfolios under the Standardised Approach	35
Tables 16a & 16b	Credit Risk Mitigation of Portfolios under the IRB Approach	37
Tables 17a & 17b	Impaired and Past Due Financing and Allowance for Credit Losses by Industry Sector	41
Table 18	Net Charges/(Write back) and Write-Offs for Financing Impairment by Industry Sector	42
Tables 19a & 19b	Movement in Financing Allowance for Credit Losses	43
Tables 20a & 20b	Market Risk-Weighted Assets and Minimum Capital Requirements	45
Tables 21a & 21b	Rate of Return Risk in the Banking Book	48
Table 22	Operational Risk-Weighted Assets and Minimum Capital Requirements	51
Table 23	Disclosure on Profit Sharing Investment Account	55
Table 24	Glossary of Terms	57

**RHB ISLAMIC BANK
BASEL II PILLAR 3 DISCLOSURES AS AT 31 DECEMBER 2023**

STATEMENT BY MANAGING DIRECTOR

In accordance with the requirements of Bank Negara Malaysia's Guideline on Capital Adequacy Framework for Islamic Banks (CAFIB) – Disclosure Requirements (Pillar 3), and on behalf of the Board of Directors and Senior Management of RHB Islamic Bank Berhad, I am pleased to provide an attestation that the Basel II Pillar 3 disclosures of RHB Islamic Bank Berhad for the year ended 31 December 2023 are accurate and complete.

DATO' ADISSADIKIN BIN ALI
Managing Director

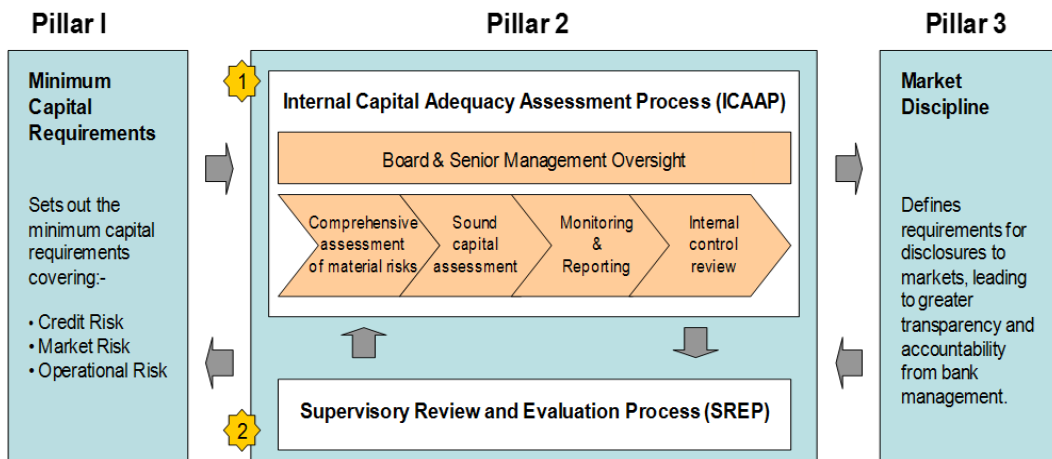
**RHB ISLAMIC BANK
BASEL II PILLAR 3 DISCLOSURES AS AT 31 DECEMBER 2023**

1.0 INTRODUCTION

This document describes RHB Islamic Bank Berhad’s risk profile, risk management practices and capital adequacy position in accordance with the disclosure requirements as outlined in the Capital Adequacy Framework for Islamic Banks (CAFIB) – Disclosure Requirements (Pillar 3) issued by Bank Negara Malaysia (BNM’s Pillar 3 Guidelines).

BNM’s guidelines on Capital Adequacy Framework for Islamic Banks (Risk-Weighted Assets) provide and specify the approaches for quantifying the risk-weighted assets for credit risk, market risk and operational risk.

Basel II introduces a more risk-based approach to regulatory capital with a distinct charge for operational risk in addition to the existing credit and market risk capital charges. It is designed to be a catalyst for more advanced risk management techniques, enterprise-wide culture of risk management and improved corporate governance and public disclosure. The Basel II approach based on the three pillars can be diagrammatically depicted as below:



Pillar 1 provides guidelines for calculation of risk-weighted assets for credit risk, market risk and operational risk, and the minimum amount of regulatory capital that banks must hold against the risks they assume. For the purpose of complying with regulatory requirements under Basel II Pillar 1, the approaches adopted by the Bank are as follows:

Entity	Credit Risk	Market Risk	Operational Risk
RHB Islamic Bank Berhad	Internal Ratings-Based Approach	Standardised Approach	Basic Indicator Approach

Pillar 2 comprises two components as follows:

- Placing obligations on banks to develop an Internal Capital Adequacy Assessment Process, and setting capital targets that commensurate with the banking institution’s risk profile and control environment; and
- Placing obligations on the supervisory authority to evaluate how well banking institutions are assessing their capital needs relative to their risks and to intervene, where appropriate.

Pillar 3 covers external communication of risk and capital information by banks. The purpose of the Pillar 3 disclosures is to complement the minimum capital requirements under Pillar 1 and the supervisory review process under Pillar 2 by encouraging market efficiency through a set of disclosure requirements that will allow market participants to assess information on banking institutions’ capital structures, risk exposures, risk management processes, and hence, their overall capital adequacy.

RHB ISLAMIC BANK
BASEL II PILLAR 3 DISCLOSURES AS AT 31 DECEMBER 2023

Basis of Disclosure

The annual Pillar 3 disclosure report is published in accordance with BNM's Pillar 3 Guidelines. This disclosure report has been verified and approved internally in line with the RHB Banking Group: Basel II Pillar 3 Disclosure Policy.

Comparative Information

This document covers the qualitative and quantitative information for financial year ended 31 December 2023 with comparative quantitative information of the preceding financial year ended 31 December 2022.

Frequency of Disclosure

The qualitative disclosures contained herein are updated on an annual basis and more frequently, if there are significant changes in the interim reporting period. The disclosures on capital adequacy and structure are made on a quarterly basis and all other quantitative disclosures are made on a semi-annual basis in accordance to the Group's reporting period.

Medium and Location of Disclosure

RHB Islamic Bank Berhad's Pillar 3 disclosure report is made available under the Investor Relations section of the Group's website at www.rhbgroup.com as a separate report in the Bank's Annual Report 2023, after the notes to the financial statements.

2.0 SCOPE OF APPLICATION

In this Pillar 3 document, RHB Islamic Bank Berhad's information is presented at entity level and is referred to as the "Bank". The Bank is a wholly owned subsidiary of RHB Bank Berhad as at 31 December 2023.

The Bank's capital requirements are as guided by BNM's Guideline on Capital Adequacy Framework for Islamic Banks (Capital Components).

3.0 CAPITAL MANAGEMENT

The overall capital management objective is to manage capital prudently and to maintain a strong capital position to drive sustainable business growth and seek strategic opportunities to enhance shareholders' value, and be in line with its risk appetite. Capital adequacy is the extent to which capital resources on the Bank's balance sheet are sufficient to cover the business capital requirements now and in the foreseeable future. It also indicates the ability of the Bank to provide financing across the business cycles and in meeting any contingency without compromising the interest of the depositors and investors. The Bank aims to maintain a strong capital position to drive sustainable business growth through an optimal capital structure while meeting regulatory requirements.

With comprehensive capital management, the Bank strives for a sound capital management that is aligned to BNM's ICAAP requirements. Key activities of our capital management involves the following:

- **Capital Strategy**

Capital strategy includes the determination of capital targets under both normal and stressed market conditions whereby considerations are given to business strategic objectives and the associated risks, external ratings and regulatory capital adequacy requirements. A comprehensive capital adequacy assessment is conducted semi-annually to ensure that the target capital level is appropriate.

- **Capital Planning**

Based on strategic direction and regulatory requirements, the Bank formulates a comprehensive and forward looking capital plan to:

- (i) support its overall risk profile and forecast the capital demand for material risks for which capital held is deemed appropriate and aligned with the Bank's risk appetite; and
- (ii) provide adequate capital for business growth, changes in asset mix or to cover unanticipated losses.

The capital plan describes the actions required to raise capital in a timely manner in both normal and stressed conditions as assumed in the stress scenarios. For capital planning purposes, capital adequacy is assessed in the multi-year financial projection under both normal and stressed scenarios, the objective of which is to ensure that the Bank maintains adequate capital on a forward-looking basis.

The Bank also establishes a capital contingency funding plan that forms part of the capital plan. The capital plan, together with the analysis and proposed actions, are reviewed by the Group Chief Financial Officer and deliberated at the respective committees before submission to the Board for approval.

- **Capital Allocation/Structuring/Optimisation**

The Bank determines the amount of capital allocated to each business line based on capital performance target and available funding. An efficient allocation of capital drives returns for the Bank's shareholders.

Capital structuring affects the Bank through its impact on cash flow and cost of capital. The Bank adopts capital structuring that maximises value and minimises overall cost of capital. In order to achieve optimum capital structure, the Bank determines the levels, mix and structure of internal and regulatory capital in line with its current and planned levels of business activities, risk appetite and desired level of capital adequacy.

The Bank optimises its capital by integrating risk-based capital into strategy and aligning this with performance measurement.

By leveraging on the capital assessment process and reporting tools and aligning the recovery planning process based on BNM requirements, the Group developed early warning triggers and recovery triggers to monitor its risk profile, capture early deterioration, and assess how that affects capital consumption/requirement. The monitoring process ensures that effective capital restoration strategies are activated and implemented immediately.

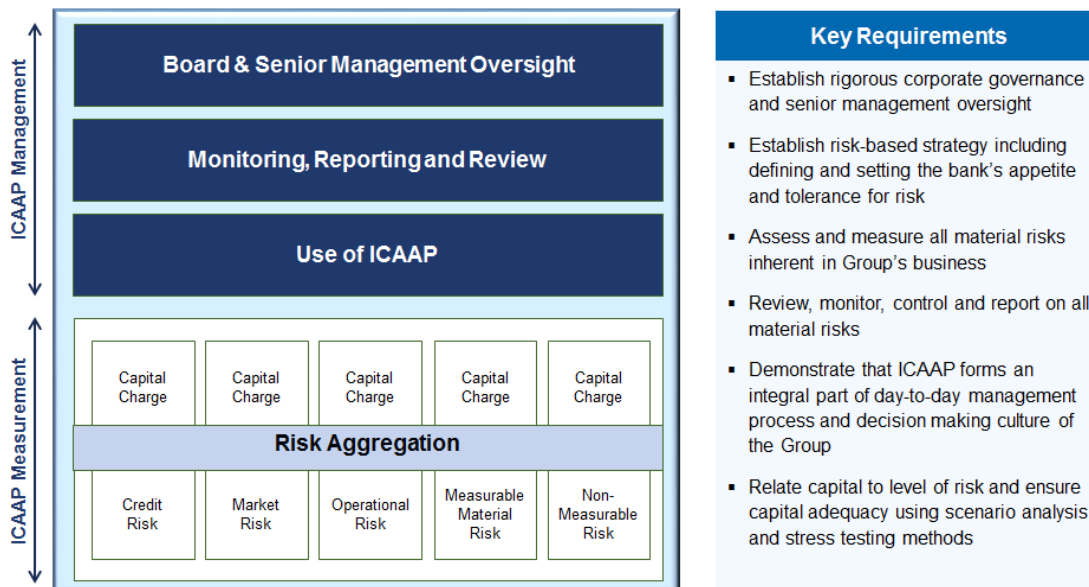
The Bank also aims to achieve a balance between dividend pay-out and the need to retain earnings in order to be consistent with its capital strength and to support business expansion. The Board reviews the dividend pay-out recommendation on an annual basis.

**RHB ISLAMIC BANK
BASEL II PILLAR 3 DISCLOSURES AS AT 31 DECEMBER 2023**

3.1 Internal Capital Adequacy Assessment Process (ICAAP)

In line with BNM’s Guideline on ICAAP under the Capital Adequacy Framework for Islamic Banks (CAFIB) – Internal Capital Adequacy Assessment Process (Pillar 2), the Bank has implemented ICAAP with the objective to forge a strong alignment between risk and capital. Capital adequacy is assessed in relation to the Bank’s risk profile, and strategies are in place to maintain appropriate capital levels.

The ICAAP Framework developed and adopted across the Bank summarises the key ICAAP requirements into two functional categories, namely; ICAAP Measurement and ICAAP Management as depicted below:



3.2 Basel III Implementation

Basel III is a comprehensive set of reform measures introduced by the Basel Committee on Banking Supervision since 2010 to strengthen the regulation, supervision, and risk management of the banking sector. The measures include both liquidity and capital reforms.

The Bank has implemented Basel III for the management of both capital and liquidity. The Bank capital ratios; Liquidity Coverage Ratio (LCR) and Net Stable Funding Ratio (NSFR) are set above the regulatory requirements as required under Basel III. The Bank was able maintain the LCR and NSFR above the Basel III regulatory requirements of 100%.

RHB ISLAMIC BANK
BASEL II PILLAR 3 DISCLOSURES AS AT 31 DECEMBER 2023

3.3 Capital Adequacy Ratios

BNM's Guideline on Capital Adequacy Framework for Islamic Banks (Capital Components) sets out the general requirements concerning regulatory capital adequacy and the components of eligible regulatory capital. Banking institutions are required to maintain, at all times, the following minimum capital adequacy ratios:

Common Equity Tier I (CET I) Capital Ratio	4.5%
Tier I Capital Ratio	6.0%
Total Capital Ratio	8.0%

In addition, the Group is required to maintain additional capital buffers in the form of CET I capital above the minimum CET I, Tier I and total capital ratios set out above. The capital buffers shall comprise of capital conservation buffer (CCB) of 2.50% and countercyclical capital buffer (CCyB) ranging from 0% to 2.50%. The CCB is intended to enable the banking system to withstand future periods of stress whilst CCyB is intended to protect the banking sector as a whole from the build-up of systemic risk during an economic upswing when aggregate credit growth tends to be excessive. CCyB is determined based on the weighted average of the prevailing CCyB rates applied in the jurisdictions in which the Group has credit exposures. BNM will communicate any decision on the CCyB rate by up to 12 months before the date from which the rate applies.

In alignment with BNM's Domestic Systemically Important Bank (D-SIB) Framework, the Group is not designated as D-SIB in the Financial Stability Review for First Half 2023. Whilst the Group is not required to maintain higher capital buffers, the designation of D-SIB status will continue to be monitored closely for any changes.

The capital ratios of the Bank as at 31 December 2023 and 31 December 2022 are:

Table 1: Capital Adequacy Ratios

<u>Capital Ratios</u>	RHB Islamic Bank	
	<u>2023</u>	<u>2022</u>
<u>Before proposed dividends</u>		
Common Equity Tier I Capital Ratio	16.125%	17.828%
Tier I Capital Ratio	16.125%	17.828%
Total Capital Ratio	18.882%	20.826%
<u>After proposed dividends</u>		
Common Equity Tier I Capital Ratio	15.516%	17.033%
Tier I Capital Ratio	15.516%	17.033%
Total Capital Ratio	18.273%	20.031%

The above capital ratios are above the minimum level required by BNM.

RHB ISLAMIC BANK
BASEL II PILLAR 3 DISCLOSURES AS AT 31 DECEMBER 2023

3.4 Minimum Capital Requirements and Risk-Weighted Assets (RWA)

The following table shows the breakdown of RWA by risk types as at 31 December 2023 and 31 December 2022:

Table 2: Risk-Weighted Assets (RWA) by Risk Types

<u>Risk Types</u>	RHB Islamic Bank	
	2023	2022
	RM'000	RM'000
Credit RWA	35,235,833	33,635,942
Credit RWA Absorbed by Profit Sharing Investment Account (PSIA)	(3,082,919)	(5,355,297)
Market RWA	187,131	170,490
Operational RWA	3,387,790	3,114,515
Total	35,727,835	31,565,650

The following tables show the breakdown of RWA by risk types and the corresponding capital requirement as at 31 December 2023 and 31 December 2022:

Table 3: Risk-Weighted Assets by Risk Types and Minimum Capital Requirements

<u>Risk Types</u>	RWA		Minimum Capital Requirements	
	2023	2022	2023	2022
	RM'000	RM'000	RM'000	RM'000
Credit Risk	32,152,914	28,280,645	2,572,233	2,262,452
Under Foundation Internal Ratings-Based (F-IRB) Approach	16,076,452	16,591,922	1,286,116	1,327,354
Under Advanced Internal Ratings-Based (A-IRB) Approach	11,661,163	10,537,071	932,893	842,966
Under Standardised Approach	7,498,218	6,506,949	599,858	520,556
Absorbed by PSIA under F-IRB Approach	(2,059,578)	(3,629,132)	(164,766)	(290,331)
Absorbed by PSIA under A-IRB Approach	(485)	(27,368)	(39)	(2,189)
Absorbed by PSIA under Standardised Approach	(1,022,856)	(1,698,797)	(81,829)	(135,904)
Market Risk				
Under Standardised Approach	187,131	170,490	14,971	13,639
Operational Risk				
Under Basic Indicator Approach	3,387,790	3,114,515	271,023	249,161
Total	35,727,835	31,565,650	2,858,227	2,525,252

Capital requirement for the three risk types is derived by multiplying the risk-weighted assets by 8%.

The Credit RWA for RHB Islamic Bank increased due to the growth of exposures in Personal Financing-i, Home Financing and Hire Purchase, coupled with the growth and deterioration in credit for Corporate exposures. This is further impacted by the withdrawal of WMMIA-i exposures from external investors which would transfer the risk of the underlying Personal Financing-i back to RHB Islamic.

RHB ISLAMIC BANK
BASEL II PILLAR 3 DISCLOSURES AS AT 31 DECEMBER 2023

4.0 CAPITAL STRUCTURE

The constituents of total eligible capital are set out in BNM's Guideline on Capital Adequacy Framework for Islamic Banks (Capital Components). These include shareholders' funds, after regulatory-related adjustments, and eligible capital instruments issued by the Bank. Tier I capital consists primarily of ordinary share capital, retained profits and other reserves. Tier II capital consists of subordinated obligations, surplus eligible provisions over expected losses and general provisions. Refer to Note 43 in the Financial Statements for the terms of these capital instruments.

The following table represents the capital position of the Bank as at 31 December 2023 and 31 December 2022:

Table 4: Capital Structure

	RHB Islamic Bank	
	2023	2022
	RM'000	RM'000
<u>Common Equity Tier I Capital/Tier I Capital</u>		
Paid up ordinary share capital	1,673,424	1,673,424
Retained profits	4,201,068	4,177,805
Other reserves	798	205
Fair value through other comprehensive income (FVOCI) reserves	(38,332)	(118,059)
Less:		
Other intangibles	(4,661)	(4,227)
Deferred tax assets	(70,560)	(100,598)
Other deductions*	(595)	(941)
Total Common Equity Tier I Capital/Tier I Capital	5,761,142	5,627,609
<u>Tier II Capital</u>		
Subordinated obligations	750,000	750,000
Surplus eligible provisions over expected losses	154,065	140,835
General provisions [^]	80,942	55,462
Total Tier II Capital	985,007	946,297
Total Capital	6,746,149	6,573,906

* Pursuant to the Basel II Market Risk para 5.18 and 5.19 – Valuation Adjustments, the Capital Adequacy Framework for Islamic Banks (Basel II - Risk Weighted Assets) calculation shall account for the ageing, liquidity and holding back adjustments/reserves on its trading portfolio.

[^] Pursuant to BNM's policy document on Financial Reporting for Islamic Banking Institutions, general provision refers to loss allowance measured at an amount equal to 12-month and lifetime expected credit losses as defined under MFRS 9 Financial Instruments; and regulatory reserves, to the extent they are ascribed to non-credit impaired exposures, determined under standardised approach.

Includes the qualifying regulatory reserve of the Bank of RM68,476,000 (31 December 2022: RM34,664,000).

5.0 RISK MANAGEMENT

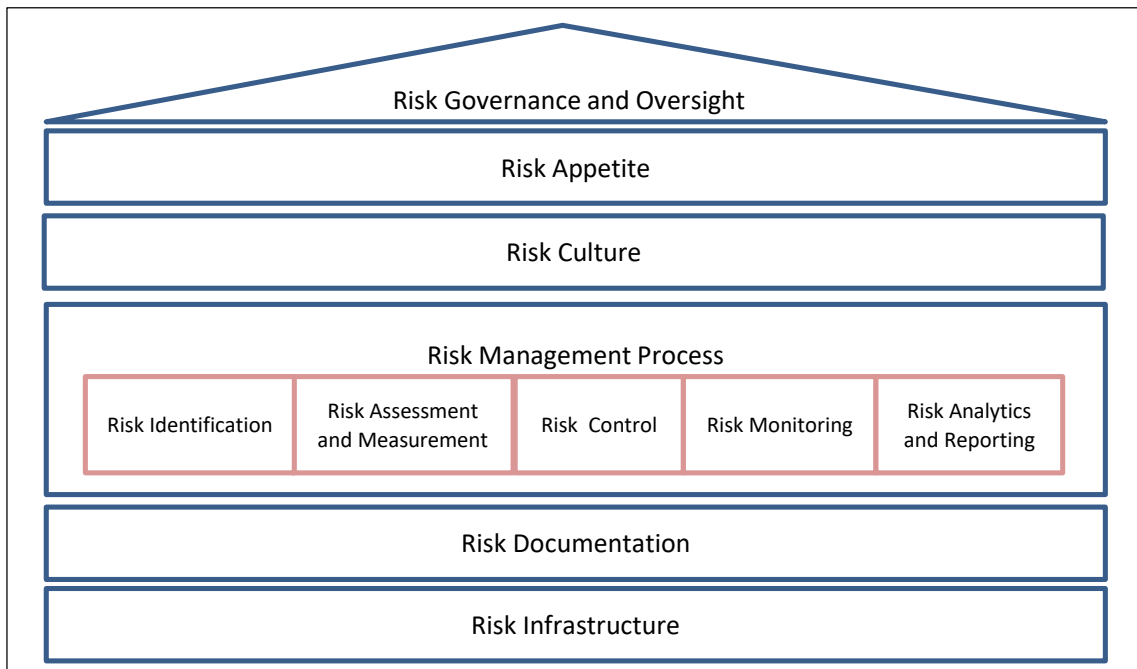
Risk is inherent in the Bank’s activities and is managed through a process of on-going identification, measurement and monitoring, subject to limits and other controls. Besides credit risk, the Bank is exposed to a range of other risk types such as market, liquidity, operational, legal, Shariah, strategic and cross-border, as well as other forms of risk inherent to its strategy, product range and geographical coverage.

Effective risk management is fundamental to drive sustainable growth and shareholders’ value, while maintaining competitive advantage, and is thus a central part of the proactive risk management of the Bank’s operating environment.

The Group Risk Management Framework governs the management of risks in the RHB Banking Group (the Group), as follows:

- It provides a holistic overview of the risk and control environment of the Group, with risk management aimed towards loss minimisation and protection against losses which may occur through, principally, the failure of effective checks and controls in the organisation.
- It sets out the strategic progression of risk management towards becoming a value creation enterprise. This is realised through building up capabilities and infrastructure in risk management sophistication, and enhanced risk quantification to optimise risk-adjusted returns.

The Group Risk Management Framework is represented in the following diagram:



Key features of the framework are:

Risk Governance and Oversight

The Board of Directors sits at the apex of the risk governance structure and is ultimately responsible for the Group’s/respective entities’ risk management strategy, appetite, framework and oversight of risk management activities.

In order to manage the businesses and risks across all subsidiaries on an integrated basis, Group level committees are established to ensure consistency in practices. However, the Group maintains entity-specific committees to allow for greater flexibility and agility in managing specific regulatory and business requirements. Each Board Risk Committee which reports directly to the respective Boards provides oversight and assists the respective Boards in reviewing the Group’s overall risk management philosophy, frameworks, policies and models, and risk issues relevant and unique to its business.

RHB ISLAMIC BANK
BASEL II PILLAR 3 DISCLOSURES AS AT 31 DECEMBER 2023

The responsibility for the supervision of the day-to-day management of enterprise risk and capital matters is delegated to the Group Capital and Risk Committee comprising the senior management of the Group and which reports to the relevant board committees and the Group Management Committee. The Investment Bank Risk Management Committee is responsible for oversight of risk management matters relating to RHB Investment Bank Group's business whilst the Group Asset and Liability Committee (Group ALCO) oversees market risk, liquidity risk and balance sheet management.

The Group Chief Risk Officer (GCRO) who reports directly to the Group Managing Director; is responsible for the risk management function. The main roles and responsibilities of GCRO are:

1. Facilitating the setting of the strategic direction and overall policy on management and control of risks of the Group;
2. Ensuring industry best practices in risk management are adopted across the Group, including the setting of risk management parameters and risk models;
3. Developing proactive, balanced and risk attuned culture within the Group; and
4. Advising senior management, management level committees, board level risk committees and Board of Directors of the Group's entities on risk issues and their possible impact on the Group in the achievement of its objectives and strategies.

GCRO is supported by the entities chief risk officers and various teams within risk management function:

1. The entities' chief risk officers main function is to assess and manage the enterprise risk and liaise with regulators in the respective country/entity under their purview. They are supported by their respective risk management teams with support from the risk management function from the Group.
2. The risk management function are teams who specialise in the respective risks and responsible for the active oversight of the Group-wide risk management function and support the respective entities/chief risk officers. Group Risk and Credit Management consist of Group Credit Risk Management, Group Market Risk Management, Group Asset and Liability Management, Group Operational Risk Management, Group Technology and Cyber Risk Management, Group Shariah Risk Management, Risk Strategy & Transformation and Enterprise Risk Analytics, Enterprise Risk Management, Group Credit Management, and Insurance Risk Management.

Risk Appetite

The Board of Directors sets the risk appetite and tolerance level that are consistent with the Group and each entity's overall business objectives and desired risk profile. It describes the types and level of risks the Group is prepared to accept in delivering its business strategies, and reported through various metrics that enable the Group to manage capital resources and shareholders' expectations.

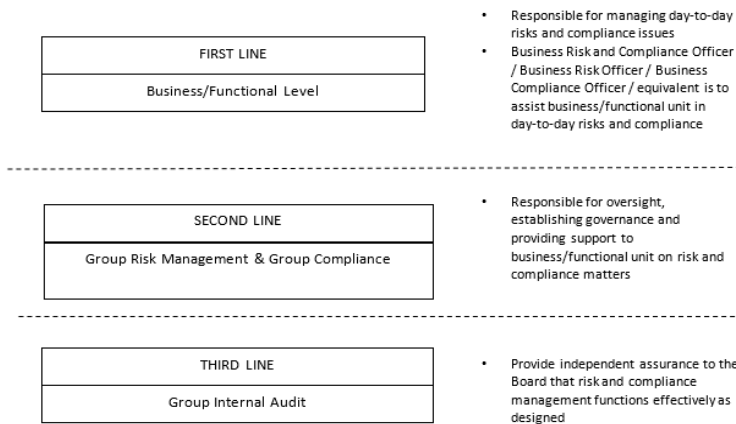
The alignment of the Group's business strategy with its risk strategy, and vice-versa is articulated through the risk appetite setting and the Group's annual business and financial budgetary plan, which is facilitated by the integration of risk measures in capital management.

Risk Culture

The Group subscribes to the principle of 'Risk and Compliance is Everyone's Responsibility' and risk management is managed via a 'three lines of defence' model. Business/functional units of the respective operating entities in the Group are collectively responsible for identifying, managing and reporting risk.

**RHB ISLAMIC BANK
BASEL II PILLAR 3 DISCLOSURES AS AT 31 DECEMBER 2023**

The approach is based on the ‘three lines of defence’ model as depicted below:



Risk Management Process

The risk management process identifies, assesses and measures, controls, monitors and reports/analyses risk. This ensures that risk exposures are adequately managed and that the expected return compensates for the risk taken.

- Identification: The identification and analysis of the existing and potential risks is a continuing process, in order to facilitate proactive and timely identification of risk within the Group’s business operations, including emerging risks. This ensures that risks can be managed and controlled within the risk appetite of the Group and specific entity, where necessary.
- Assessment and Measurement: Risks are measured, assessed and aggregated using comprehensive qualitative and quantitative risk measurement methodologies, and the process also serves as an important tool as it provides an assessment of capital adequacy and solvency.
- Controlling: Risks identified during the risk identification process must be adequately managed and mitigated to control the risk of loss. This is also to ensure risk exposures are managed within the Group’s or entity’s risk appetite.
- Monitoring: Effective monitoring process ensures that the Group is aware of the condition of its exposures vis-à-vis its approved appetite and to facilitate early identification of potential problem on a timely basis by using continuous and on-going monitoring of risk exposures and risk control/mitigation measures.
- Analytics and Reporting: Risk analysis and reports are prepared by the respective entities and at a consolidated level as well as business level; and are regularly escalated to the senior management and relevant Boards of the Group’s entities to ensure that the risks identified remain within the established appetite and to support an informed decision-making process. Reporting and analytics are also being continuously enhanced to provide the necessary information to relevant stakeholders within the Group to facilitate more effective decision making.

In addition, risk management seeks to ensure that risk decisions are consistent with strategic business objectives and within the risk appetite.

Risk Documentation

The Group recognises that effective implementation of the risk management system and process must be supported by a robust set of documentation. Towards this end, the Group has established frameworks, policies and other relevant control documents to ensure clearly defined practices and processes are effected consistently across the Group. Documents are subject to a robust review process to ensure they remain current.

Risk Infrastructure

The Group has organised its resources and talents into specific functions, and invested in the technology, including data management to support the Group’s risk management activities. Staff have clear roles and responsibilities, given access to relevant and up-to-date risk information, and the latitude to continuously enhance competency through learning and development programmes.

RHB ISLAMIC BANK
BASEL II PILLAR 3 DISCLOSURES AS AT 31 DECEMBER 2023

Risk systems and tools are designed to provide accessibility of risk information that complement the risk management process. The availability of data for analytics and monitoring, and dashboards and reporting assists in continuously enhancing risk management capabilities. The Group's Risk Management Report has evolved to be more analytically driven with dashboards that include elements of quantitative and qualitative forward looking projections.

Effective risk management requires the Group to continuously review its risk management capabilities to effectively manage risk and to improve risk management practices across the Group. Therefore, the Group has embarked on transformation journeys striving for improvements for better efficiency and effectiveness.

6.0 CREDIT RISK

Credit Risk Definition

Credit risk is the risk of loss arising from customers' or counterparties' failure to fulfil their financial and contractual obligations in accordance to the agreed terms.

6.1 Credit Risk Management Oversight and Organisation

Group Credit Committee (GCC)/Group Investment Underwriting Committee (GIUC) are the senior management committee empowered to (i) deliberate, approve or reject all financial investments, counterparty credit, financing and stockbroking/equities/futures business related proposals up to the defined threshold limits, and (ii) direct, monitor, review and consider such issues as may materially impact on the present and future quality of the Group's asset book.

The Board Credit Committee's (BCC) main functions are (i) affirming, vetoing or imposing more stringent conditions on credits of the Group which are duly approved by the GCC, (ii) overseeing the management of impaired and high risk accounts, and (iii) approving credit transactions to connected parties up to the defined threshold limits. BCC also endorses policy financing and financing required by BNM to be referred to the respective members of the Boards for approval.

The Group Credit Management has the functional responsibility to ensure that internal processes and credit underwriting standards are adhered to before financing proposals are approved. All financing proposals are firstly assessed for its credit worthiness by the originating business units before being evaluated by an independent credit manager and decided upon by delegated financing authority/relevant committees.

All financing exposure limits are approved within a defined credit approval authority framework. The Group Credit Risk Management has the functional responsibility for credit risk management, portfolio risk monitoring, risk reporting and development of credit policies and guidelines. The Group also conducts regular credit stress tests to assess the credit portfolio's vulnerability to adverse credit risk events.

6.2 Credit Risk Management Approach

The Group's credit risk management framework is founded upon BNM's Policy on Credit Risk. The Group abides by its Group Credit Policy which supports the development of a strong credit culture with the objective of maintaining a diversified portfolio, and a reliable and satisfactory risk-weighted return.

The Bank's credit risk management process is documented in the Group Credit Guidelines (GCG) and Group Credit Procedures Manual (GCPM) which sets out the operational procedures and guidelines governing the credit processes within the Group.

Financing to Corporate and Institutional Customers

Financing to corporate and institutional customers are individually evaluated and risk-rated. Credit underwriters identify and assess the credit risk of large corporate or institutional customers, or customer groups, taking into consideration their financial and business profiles, industry and economic factors, collateral, or other credit support.

Credit Risk from Investment or Trading Activities

In the course of its trading or investment activities, the Bank is also exposed to credit risks from trading, derivative and debt securities activities. Relevant credit guidelines are established to govern the credit risk via guidance on derivatives, hedging and investment related activities of the different exposures.

Financing to Consumers and Small Businesses

For retail and small business' program financing, credit risk is managed on a portfolio basis leveraging on internal credit rating models. For consumers and small businesses, credit risk is assessed and extended based on a set of clearly defined credit risk acceptance criteria, regular post approval review and credit risk monitoring to enable rigorous risk assessment, objective decision making, cost efficient processing and effective portfolio management.

Financing to Share Margin Financing

Financing to share margin clients are based on credit/financing facilities made available to these clients for trading or redemption of securities that are listed in Bursa Malaysia Berhad in accordance with the Bursa Securities Rules. Credit risk is mitigated through the establishment of appropriate approving authority structure/matrix for the extension of trading/credit limits. Within clearly defined guidelines approved by the Board and in line with applicable laws and regulations, credit risk management also encompasses the systematic credit assessment, close monitoring of limits, exposures and concentration risk to counterparties or issuer, through timely management reporting procedures.

Credit Risk Mitigation

The Group generally does not grant credit facilities solely on the basis of collateral provided. All credit facilities are granted based on the credit standing of the customer, source of repayment and debt/financing servicing ability. Collateral is taken whenever possible to mitigate the credit risk assumed, subject to the Group's policies that govern the eligibility of collateral used for credit risk mitigation. Reliance on collateral when taken is carefully assessed in the light of issues such as legal certainty and enforceability, market valuation and counterparty risk of the guarantor. Recognised collaterals where relevant, include both financial and physical assets. The Group also accepts non-tangible securities as credit support. Tables 15a, 15b, 16a and 16b show the credit risk mitigation of portfolios under the Standardised Approach and IRB Approach respectively as at 31 December 2023 compared with 31 December 2022.

The Group has an established mechanism to monitor credit and market concentration within its credit mitigation.

Credit Concentration Risk

Risk concentrations can materialise from excessive exposure to a single counterparty or group of connected counterparties, a particular instrument or a particular market segment. The Group manages the diversification of its portfolio to avoid undue credit concentration risk. To manage these concentration risks, appropriate exposure thresholds/limits are established accordingly.

RHB ISLAMIC BANK
BASEL II PILLAR 3 DISCLOSURES AS AT 31 DECEMBER 2023

6.3 Credit Monitoring and Annual Reviews

The Group regularly monitors credit exposure, portfolio performance, and external trends which may impact risk management outcomes. Internal risk management reports generated for senior management, respective risk committees and Board, and include information on portfolio quality, credit rating migration and concentration risk exposures. Such reporting allows senior management to identify adverse credit trends, take prompt corrective actions, and ensure appropriate risk-adjusted decision making.

Reviews are conducted at least once a year with updated information on the customer's financial position, market position, industry and economic condition and account conduct. Specific financings may be reviewed more frequently under appropriate circumstances.

Within Group Risk and Credit Management, there is a mechanism in place for credit monitoring to flagout problematic financing (watch list accounts) for intensive monitoring under Watchlist Credit Management. These are accounts which may be exhibiting early distress patterns or in the early stages of delinquency but not yet in default. For these cases, the Watchlist Credit Management department will conduct independent assessments and work closely with the business units to implement strategies to address business relationships. The aim is to rehabilitate these accounts following discussions with the customer to determine the root cause of the problem which may result in rescheduling, restructuring or "exit" strategies to be applied. For the larger or selected accounts, regular position update meetings are held with business units to review or revise these strategies. The relevant guidelines are refined from time to time, to better identify, monitor and resolve such accounts.

Group Internal Audit conducts independent post-approval reviews on a sampling basis to ensure that the quality of credit appraisals and approval standards is in accordance with the credit underwriting standards and financing policies established by the Group's management, and relevant laws and regulations.

Credit Risk Measurement

Along with judgement and experience, risk measurement or quantification plays a critical role in making informed risk taking and portfolio management decisions. As the nature of credit risk varies by financing type, the Group applies different credit risk measuring tools, so that the credit risk of each financing type is appropriately reflected. These measurement tools are developed for the material credit exposures, which fall under the IRB Approach.

The following represents the dimensions considered in the credit risk measurement:

1.0 Probability of Default (PD)

Probability of default refers to likelihood that a customer is unable to meet its debt obligation. For corporate/non-retail financing, the probability of default is measured from obligor (or customer) rating obtained from the risk rating system to determine obligor's level of default risk. The risk rating of each obligor is regularly reviewed to ensure that it actually reflects the debtor's/customer's updated default risk. For retail exposures/financing, the default risk is measured via respective scoring model i.e. application scorecard, behavioural scorecard and customer centric scorecard.

2.0 Loss Given Default (LGD)

LGD is the amount of loss incurred when a customer defaults. For corporate financing, LGD is determined via the credit risk mitigation adjustment, in which the coverage of collateral and security will determine the level of LGD for a specific transaction. For retail financing, LGD is determined at respective segment (or pool) level.

3.0 Exposure at Default (EAD)

EAD is calculated from the current outstanding balance and availability of committed financing line. In this regard, the key factor is the Group's obligation related to the available financing line. For corporate financing, the EAD is measured at an individual obligor exposure as per BNM's Guideline on Capital Adequacy Framework (Basel II – Risk-Weighted Assets) and the Capital Adequacy Framework for Islamic Banks (Risk-Weighted Assets). For retail financing, the principle of credit risk measurement is similar, but measured on a pooled basis, based on internal models.

RHB ISLAMIC BANK
BASEL II PILLAR 3 DISCLOSURES AS AT 31 DECEMBER 2023

6.4 Off-Balance Sheet Exposures and Counterparty Credit Risk (CCR)

The management of the following off-balance sheet exposures of the Bank is in accordance to the credit risk management approach as set out under Section 6.2 of this document:

- Financial guarantees and standby letters of credit, which represent undertakings that the Bank will make payments in the event that its customer cannot meet its obligations to third-parties. These exposures carry the same credit risk as financing even though they are contingent in nature;
- Documentary and commercial letters of credit, which are undertakings by the Bank on behalf of its customers. These exposures are usually collateralised by the underlying shipment of goods to which they relate;
- Commitments to extend financing, which includes the unutilised or undrawn portions of financing
- Unutilised credit card lines; and
- Credit equivalent amount of derivative financial instruments.

Counterparty Credit Risk

Counterparty Credit Risk is the risk that the counterparty to a transaction could default before the final settlement of the transaction's cash flows. An economic loss would occur if the transactions or portfolio of transactions with the counterparty has a positive economic value at the time of default. Unlike a firm's exposure to credit risk through a financing, where the exposure to credit risk is unilateral and only the bank providing financing faces the risk of loss, CCR creates a bilateral risk of loss: the market value of the transaction can be positive or negative to either counterparty to the transaction. The market value is uncertain and can vary over time with the movement of underlying market factors.

Counterparty risk is typically associated with two broad classes of financial products:

- Over-the-counter derivatives such as profit rate swaps, FX forwards and credit default swaps.
- Securities financing transactions such as repos and reverse repos; and securities selling and buying.

Derivative financial instruments are entered into for hedging or proprietary trading purposes governed by Board approved limits and internal controls.

Any financial loss is calculated based on the cost to replace the defaulted derivative financial instruments with another similar contract in the market. The cost of replacement is equivalent to the difference between the original value of the derivatives at the time of contract with the defaulted counterparty and the current fair value of a similar substitute at current market prices.

All outstanding financial derivative positions are marked-to-market on a daily basis. The Bank monitors counterparties' positions and promptly escalates any shortfall in the threshold levels to the relevant parties for next course of action.

6.5 Credit Exposures and Risk-Weighted Assets by Portfolio and Approaches

All credit exposures of the Bank are booked in Malaysia. The following tables show the credit exposures or Exposure at Default (EAD) as at 31 December 2023 compared with 31 December 2022, segregated by:

- the various types of asset classes, showing details of the exposures by type of approaches, before and after credit risk mitigation (CRM), the corresponding RWA and capital requirements;
- disclosure on off-balance sheet and counterparty credit risk;
- industry sector;
- residual maturity; and
- disclosures under the Standardised Approach by risk weights.

RHB ISLAMIC BANK
BASEL II PILLAR 3 DISCLOSURES AS AT 31 DECEMBER 2023

Table 5a: Summary of Credit Exposures with Credit Risk Mitigation (CRM) by Asset Class and Minimum Capital Requirements (On and Off-Balance Sheet Exposures) as at 31 December 2023

RHB Islamic Bank	Gross Exposures/ EAD Before CRM RM'000	Net Exposures/ EAD After CRM RM'000	Risk- Weighted Assets RM'000	Risk- Weighted Assets Absorbed by PSIA RM'000	Total Risk- Weighted Assets After Effect of PSIA RM'000	Minimum Capital Requirements RM'000
Exposures under Standardised Approach (SA)						
On-Balance Sheet Exposures						
Sovereigns & Central Banks	9,424,542	9,424,542	-	-	-	-
Public Sector Entities	7,344,700	7,273,100	11,449	(3,019)	8,430	674
Banks, Development Financial Institutions & MDBs	2,855,927	2,855,927	595,381	-	595,381	47,630
Takaful Cos, Securities Firms & Fund Managers	119	119	119	-	119	10
Corporates	1,953,649	1,941,768	817,132	-	817,132	65,371
Regulatory Retail	5,779,404	5,764,588	5,706,600	(1,009,568)	4,697,032	375,763
Residential Financing	17,809	17,801	7,820	(1)	7,819	625
Other Assets	73,056	73,056	62,450	-	62,450	4,996
Defaulted Exposures	164,759	63,639	84,188	(10,268)	73,920	5,914
Total On-Balance Sheet Exposures	27,613,965	27,414,540	7,285,139	(1,022,856)	6,262,283	500,983
Off-Balance Sheet Exposures						
OTC Derivatives	520,628	520,548	108,584	-	108,584	8,687
Off-balance sheet exposures other than OTC derivatives or credit derivatives	719,805	683,160	104,495	-	104,495	8,359
Defaulted Exposures	-	-	-	-	-	-
Total Off-Balance Sheet Exposures	1,240,433	1,203,708	213,079	-	213,079	17,046
Total On and Off-Balance Sheet Exposures under SA	28,854,398	28,618,248	7,498,218	(1,022,856)	6,475,362	518,029
Exposures under F-IRB Approach						
On-Balance Sheet Exposures						
Corporates, of which	24,307,766	24,307,766	14,026,501	(1,919,747)	12,106,754	968,540
Corporate Exposures (excluding exposures with firm size adjustments)	14,689,653	14,689,653	7,827,838	(1,428,801)	6,399,037	511,923
Corporate Exposures (with firm size adjustments)	7,230,616	7,230,616	4,224,140	(313,873)	3,910,267	312,821
Specialised Financing Exposures (Slotting Approach)	-	-	-	-	-	-
Project Finance	168,516	168,516	146,432	-	146,432	11,715
Income Producing Real Estate	2,218,981	2,218,981	1,828,091	(177,073)	1,651,018	132,081
Defaulted Exposures	1,818,046	1,818,046	3,394	-	3,394	271
Total On-Balance Sheet Exposures	26,125,812	26,125,812	14,029,895	(1,919,747)	12,110,148	968,811
Off-Balance Sheet Exposures						
OTC Derivatives	19,744	19,744	32,120	-	32,120	2,570
Off-balance sheet exposures other than OTC derivatives or credit derivatives	2,482,299	2,482,299	1,104,449	(23,251)	1,081,198	86,496
Defaulted Exposures	91	91	-	-	-	-
Total Off-Balance Sheet Exposures	2,502,134	2,502,134	1,136,569	(23,251)	1,113,318	89,066
Exposures under A-IRB Approach						
On-Balance Sheet Exposures						
Retail, of which	52,067,406	52,067,406	9,618,163	(409)	9,617,754	769,420
Residential Financing Exposures	27,397,537	27,397,537	4,197,691	(374)	4,197,317	335,785
Qualifying Revolving Retail Exposures	348,134	348,134	214,072	-	214,072	17,126
Hire Purchase Exposures	10,406,841	10,406,841	3,216,647	-	3,216,647	257,332
Other Retail Exposures	13,914,894	13,914,894	1,989,753	(35)	1,989,718	159,177
Defaulted Exposures	983,485	983,485	606,074	(48)	606,026	48,482
Total On-Balance Sheet Exposures	53,050,891	53,050,891	10,224,237	(457)	10,223,780	817,902
Off-Balance Sheet Exposures						
OTC Derivatives	-	-	-	-	-	-
Off-balance sheet exposures other than OTC derivatives or credit derivatives	5,013,835	5,013,835	770,987	-	770,987	61,679
Defaulted Exposures	16,503	16,503	5,873	-	5,873	470
Total Off-Balance Sheet Exposures	5,030,338	5,030,338	776,860	-	776,860	62,149
Total On and Off-Balance Sheet Exposures before scaling factor under the IRB Approach	86,709,175	86,709,175	26,167,561	(1,943,455)	24,224,106	1,937,928
Total On and Off-Balance Sheet Exposures after scaling factor, 1.06 under the IRB Approach			27,737,615	(2,060,063)	25,677,552	2,054,204
Total (Exposures under the SA Approach and Exposures under the IRB Approach)	115,563,573	115,327,423	35,235,833	(3,082,919)	32,152,914	2,572,233

RHB ISLAMIC BANK
BASEL II PILLAR 3 DISCLOSURES AS AT 31 DECEMBER 2023

Table 5b: Summary of Credit Exposures with Credit Risk Mitigation (CRM) by Asset Class and Minimum Capital Requirements (On and Off-Balance Sheet Exposures) as at 31 December 2022 (Restated)

RHB Islamic Bank	Gross Exposures/ EAD Before CRM RM'000	Net Exposures/ EAD After CRM RM'000	Risk- Weighted Assets RM'000	Risk- Weighted Assets Absorbed by PSIA RM'000	Total Risk- Weighted Assets After Effect of PSIA RM'000	Minimum Capital Requirements RM'000
Exposures under Standardised Approach (SA)						
On-Balance Sheet Exposures						
Sovereigns & Central Banks	10,146,980	10,146,980	-	-	-	-
Public Sector Entities	7,842,192	7,770,592	116,553	(3,019)	113,534	9,083
Banks, Development Financial Institutions & MDBs	2,689,740	2,689,740	560,114	-	560,114	44,809
Takaful Cos, Securities Firms & Fund Managers	-	-	-	-	-	-
Corporates	1,004,725	894,891	571,847	-	571,847	45,748
Regulatory Retail	5,007,412	4,997,226	4,937,837	(1,679,964)	3,257,873	260,629
Residential Financing	9,412	9,412	3,966	(25)	3,941	315
Other Assets	59,526	59,526	47,509	-	47,509	3,801
Defaulted Exposures	41,379	41,369	52,365	(15,789)	36,576	2,926
Total On-Balance Sheet Exposures	26,801,366	26,609,736	6,290,191	(1,698,797)	4,591,394	367,311
Off-Balance Sheet Exposures						
OTC Derivatives	579,789	576,485	115,823	-	115,823	9,266
Off-balance sheet exposures other than OTC derivatives or credit derivatives	668,098	636,576	100,935	-	100,935	8,075
Defaulted Exposures	-	-	-	-	-	-
Total Off-Balance Sheet Exposures	1,247,887	1,213,061	216,758	-	216,758	17,341
Total On and Off-Balance Sheet Exposures under SA	28,049,253	27,822,797	6,506,949	(1,698,797)	4,808,152	384,652
Exposures under F-IRB Approach						
On-Balance Sheet Exposures						
Corporates, of which	26,887,675	26,887,675	14,442,420	(3,417,761)	11,024,659	881,972
Corporate Exposures (excluding exposures with firm size adjustments)	16,670,314	16,670,314	8,401,319	(3,058,334)	5,342,985	427,439
Corporate Exposures (with firm size adjustments)	8,201,556	8,201,556	4,351,493	(179,252)	4,172,241	333,779
Specialised Financing Exposures (Slotting Approach)	-	-	-	-	-	-
Project Finance	139,096	139,096	139,530	-	139,530	11,162
Income Producing Real Estate	1,876,709	1,876,709	1,550,078	(180,175)	1,369,903	109,592
Defaulted Exposures	1,428,400	1,428,400	1,912	-	1,912	153
Total On-Balance Sheet Exposures	28,316,075	28,316,075	14,444,332	(3,417,761)	11,026,571	882,125
Off-Balance Sheet Exposures						
OTC Derivatives	15,148	15,148	16,194	-	16,194	1,296
Off-balance sheet exposures other than OTC derivatives or credit derivatives	2,640,750	2,640,750	1,192,231	(5,948)	1,186,283	94,903
Defaulted Exposures	60	60	-	-	-	-
Total Off-Balance Sheet Exposures	2,655,958	2,655,958	1,208,425	(5,948)	1,202,477	96,199
Exposures under A-IRB Approach						
On-Balance Sheet Exposures						
Retail, of which	48,156,300	48,156,300	8,589,739	(23,544)	8,566,195	685,296
Residential Financing Exposures	23,817,087	23,817,087	3,583,726	(20,559)	3,563,167	285,053
Qualifying Revolving Retail Exposures	288,486	288,486	179,437	-	179,437	14,355
Hire Purchase Exposures	9,631,747	9,631,747	2,942,782	-	2,942,782	235,423
Other Retail Exposures	14,418,980	14,418,980	1,883,794	(2,985)	1,880,809	150,465
Defaulted Exposures	719,435	719,435	523,136	(2,275)	520,861	41,669
Total On-Balance Sheet Exposures	48,875,735	48,875,735	9,112,875	(25,819)	9,087,056	726,965
Off-Balance Sheet Exposures						
OTC Derivatives	-	-	-	-	-	-
Off-balance sheet exposures other than OTC derivatives or credit derivatives	5,344,602	5,344,602	822,005	-	822,005	65,760
Defaulted Exposures	10,212	10,212	5,753	-	5,753	460
Total Off-Balance Sheet Exposures	5,354,814	5,354,814	827,758	-	827,758	66,220
Total On and Off-Balance Sheet Exposures before scaling factor under the IRB Approach	85,202,582	85,202,582	25,593,390	(3,449,528)	22,143,862	1,771,509
Total On and Off-Balance Sheet Exposures after scaling factor, 1.06 under the IRB Approach			27,128,993	(3,656,500)	23,472,493	1,877,800
Total (Exposures under the SA Approach and Exposures under the IRB Approach)	113,251,835	113,025,379	33,635,942	(5,355,297)	28,280,645	2,262,452

RHB ISLAMIC BANK
BASEL II PILLAR 3 DISCLOSURES AS AT 31 DECEMBER 2023

Table 6a: Exposures on Off-Balance Sheet and Counterparty Credit Risk (Before Credit Risk Mitigation) as at 31 December 2023

RHB Islamic Bank	Principal/ Notional Amount	Positive Fair Value of Derivative Contracts	Credit Equivalent Amount	Risk- Weighted Assets
<u>Nature of Item</u>	RM'000	RM'000	RM'000	RM'000
Transaction related contingent items	354,714		177,357	90,383
Short term self liquidating trade related contingencies	264,074		52,815	46,133
Foreign exchange related contracts	10,484,820	73,420	274,622	72,345
1 year or less	9,196,596	73,420	182,814	53,983
Over 1 year to 5 years	1,288,224	-	91,808	18,362
Over 5 years	-	-	-	-
Profit rate related contracts	6,074,973	78,973	198,918	54,993
1 year or less	2,040,000	-	2,490	498
Over 1 year to 5 years	3,912,400	76,881	188,207	51,932
Over 5 years	122,573	2,092	8,221	2,563
Commodity contracts	142,688	1,474	13,788	2,757
1 year or less	56,144	583	3,945	789
Over 1 year to 5 years	86,544	891	9,843	1,968
Over 5 years	-	-	-	-
OTC derivative transactions and credit derivative contracts subject to valid bilateral netting agreements	5,742,651	5,233	53,044	10,609
Other commitments, such as formal standby facilities and financing lines, with original maturity of over 1 year	9,891,983		7,983,974	1,849,240
Other commitments, such as formal standby facilities and financing lines, with original maturity of up to 1 year	18,388		18,387	48
Any commitments that are unconditionally cancellable at any time by the Bank without prior notice or that effectively provide for automatic cancellation due to deterioration in a customer's creditworthiness	2,503,444		-	-
Total	35,477,735	159,100	8,772,905	2,126,508

RHB ISLAMIC BANK
BASEL II PILLAR 3 DISCLOSURES AS AT 31 DECEMBER 2023

Table 6b: Exposures on Off-Balance Sheet and Counterparty Credit Risk (Before Credit Risk Mitigation) as at 31 December 2022

RHB Islamic Bank	Principal/ Notional Amount	Positive Fair Value of Derivative Contracts	Credit Equivalent Amount	Risk- Weighted Assets
<u>Nature of Item</u>	<u>RM'000</u>	<u>RM'000</u>	<u>RM'000</u>	<u>RM'000</u>
Transaction related contingent items	381,269		190,634	100,481
Short term self liquidating trade related contingencies	264,229		52,846	45,507
Foreign exchange related contracts	1,360,648	15,110	33,135	19,657
1 year or less	1,360,648	15,110	33,135	19,657
Over 1 year to 5 years	-	-	-	-
Over 5 years	-	-	-	-
Profit rate related contracts	630,000	-	630	126
1 year or less	630,000	-	630	126
Over 1 year to 5 years	-	-	-	-
Over 5 years	-	-	-	-
Commodity contracts	114,167	-	-	-
1 year or less	50,000	-	-	-
Over 1 year to 5 years	64,167	-	-	-
Over 5 years	-	-	-	-
OTC derivative transactions and credit derivative contracts subject to valid bilateral netting agreements	17,307,455	260,873	561,172	112,234
Other commitments, such as formal standby facilities and financing lines, with original maturity of over 1 year	10,217,382		8,405,621	1,974,906
Other commitments, such as formal standby facilities and financing lines, with original maturity of up to 1 year	14,621		14,621	30
Any commitments that are unconditionally cancellable at any time by the Bank without prior notice or that effectively provide for automatic cancellation due to deterioration in a customer's creditworthiness	2,681,811		-	-
Total	32,971,582	275,983	9,258,659	2,252,941

RHB ISLAMIC BANK
BASEL II PILLAR 3 DISCLOSURES AS AT 31 DECEMBER 2023

Table 7a: Credit Risk Exposures (Before Credit Risk Mitigation) by Industry Sector as at 31 December 2023

RHB Islamic Bank <u>Exposure Class</u>	Agriculture	Mining & Quarrying	Manufacturing	Electricity, Gas & Water Supply	Construction	Wholesale, Retail Trade, Restaurants & Hotels	Transport, Storage & Communication	Finance, Insurance/ Takaful, Real Estate & Business	Education, Health & Others	Household	Others	Total
	RM'000	RM'000	RM'000	RM'000	RM'000	RM'000	RM'000	RM'000	RM'000	RM'000	RM'000	RM'000
Exposures under Standardised Approach												
Approach												
Sovereigns & Central Banks	-	-	-	-	-	-	-	5,696,771	3,727,771	-	-	9,424,542
Public Sector Entities	475,420	-	-	-	-	-	-	-	7,495,925	-	-	7,971,345
Banks, Development Financial Institutions & MDBs	-	-	-	-	-	-	-	3,324,298	-	-	-	3,324,298
Takaful Cos, Securities Firms & Fund Managers	-	-	-	-	-	-	-	1,119	-	-	-	1,119
Corporates	5,716	1,846	32,226	1,767	31,802	207,836	118,926	1,701,650	6,328	26,430	-	2,134,527
Regulatory Retail	1,612	821	21,284	210	20,337	57,312	7,742	14,896	977	5,782,484	-	5,907,675
Residential Financing	-	-	-	-	-	-	-	-	-	17,836	-	17,836
Other Assets	-	-	-	-	-	-	-	-	-	-	73,056	73,056
Total Exposures under Standardised Approach	482,748	2,667	53,510	1,977	52,139	265,148	126,668	10,738,734	11,231,001	5,826,750	73,056	28,854,398
Exposures under IRB Approach												
Corporates, of which	2,008,337	1,402,482	2,373,478	2,041,943	4,159,742	2,200,003	4,788,812	8,178,109	1,475,040	-	-	28,627,946
Corporate Exposures (excluding exposures with firm size adjustments)	1,271,134	1,300,093	1,324,837	1,913,403	1,386,968	577,508	3,744,065	4,763,071	1,121,438	-	-	17,402,517
Corporate Exposures (with firm size adjustments)	737,203	75,453	1,048,641	30,683	1,001,810	1,497,494	1,044,747	2,767,737	247,730	-	-	8,451,498
Specialised Financing Exposures (Slotting Approach)	-	-	-	-	-	-	-	-	-	-	-	-
Project Finance	-	26,936	-	97,857	5,290	-	-	-	105,872	-	-	235,955
Income Producing Real Estate	-	-	-	-	1,765,674	125,001	-	647,301	-	-	-	2,537,976
Retail, of which	99,149	21,865	829,234	32,331	629,677	2,849,773	532,481	884,019	167,469	52,035,231	-	58,081,229
Residential Financing Exposures	-	-	-	-	-	-	-	-	-	28,369,312	-	28,369,312
Qualifying Revolving Retail Exposures	-	-	-	-	-	-	-	-	-	576,215	-	576,215
Hire Purchase Exposures	-	-	-	-	-	-	-	-	-	10,473,610	-	10,473,610
Other Retail Exposures	99,149	21,865	829,234	32,331	629,677	2,849,773	532,481	884,019	167,469	12,616,094	-	18,662,092
Total Exposures under IRB Approach	2,107,486	1,424,347	3,202,712	2,074,274	4,789,419	5,049,776	5,321,293	9,062,128	1,642,509	52,035,231	-	86,709,175
Total Exposures under Standardised and IRB Approaches	2,590,234	1,427,014	3,256,222	2,076,251	4,841,558	5,314,924	5,447,961	19,800,862	12,873,510	57,861,981	73,056	115,563,573

RHB ISLAMIC BANK
BASEL II PILLAR 3 DISCLOSURES AS AT 31 DECEMBER 2023

Table 7b: Credit Risk Exposures (Before Credit Risk Mitigation) by Industry Sector as at 31 December 2022 (Restated)

RHB Islamic Bank												Total
	Agriculture	Mining & Quarrying	Manufacturing	Electricity, Gas & Water Supply	Construction	Wholesale, Retail Trade, Restaurants & Hotels	Transport, Storage & Communication	Finance, Insurance/ Takaful, Real Estate & Business	Education, Health & Others	Household	Others	
Exposure Class	RM'000	RM'000	RM'000	RM'000	RM'000	RM'000	RM'000	RM'000	RM'000	RM'000	RM'000	RM'000
Exposures under Standardised Approach												
Sovereigns & Central Banks	-	-	-	-	-	-	-	6,029,247	4,117,733	-	-	10,146,980
Public Sector Entities	518,343	-	-	-	-	-	-	-	7,906,524	-	-	8,424,867
Banks, Development Financial Institutions & MDBs	-	-	-	-	-	-	-	3,220,644	-	-	-	3,220,644
Takaful Cos, Securities Firms & Fund Managers	-	-	-	-	-	-	-	-	-	-	-	-
Corporates	6,327	2,158	21,453	2,178	36,364	89,753	121,184	792,650	6,779	49,924	284	1,129,054
Regulatory Retail	1,392	1,077	10,255	334	12,000	22,487	5,013	10,491	659	4,995,008	50	5,058,766
Residential Financing	-	-	-	-	-	-	-	-	-	9,416	-	9,416
Other Assets	-	-	-	-	-	-	-	-	-	-	59,526	59,526
Total Exposures under Standardised Approach	526,062	3,235	31,708	2,512	48,364	112,240	126,197	10,053,032	12,031,695	5,054,348	59,860	28,049,253
Exposures under IRB Approach												
Corporates, of which	1,883,687	1,341,122	2,211,730	1,843,957	6,003,088	1,649,748	6,873,248	8,403,449	761,659	-	345	30,972,033
Corporate Exposures (excluding exposures with firm size adjustments)	1,110,040	1,239,591	1,152,305	1,745,829	2,105,868	510,404	6,192,728	4,896,375	457,466	-	345	19,410,951
Corporate Exposures (with firm size adjustments)	773,647	71,158	1,059,425	54,869	2,542,588	1,092,850	680,520	2,721,197	208,993	-	-	9,205,247
Specialised Financing Exposures (Slotting Approach)												
Project Finance	-	30,373	-	43,259	36,097	-	-	-	95,200	-	-	204,929
Income Producing Real Estate	-	-	-	-	1,318,535	46,494	-	785,877	-	-	-	2,150,906
Retail, of which	96,073	20,110	706,159	13,487	602,854	2,605,231	515,433	850,303	156,441	48,664,458	-	54,230,549
Residential Financing Exposures	-	-	-	-	-	-	-	-	-	24,678,961	-	24,678,961
Qualifying Revolving Retail Exposures	-	-	-	-	-	-	-	-	-	490,982	-	490,982
Hire Purchase Exposures	-	-	-	-	-	-	-	-	-	9,682,846	-	9,682,846
Other Retail Exposures	96,073	20,110	706,159	13,487	602,854	2,605,231	515,433	850,303	156,441	13,811,669	-	19,377,760
Total Exposures under IRB Approach	1,979,760	1,361,232	2,917,889	1,857,444	6,605,942	4,254,979	7,388,681	9,253,752	918,100	48,664,458	345	85,202,582
Total Exposures under Standardised and IRB Approaches	2,505,822	1,364,467	2,949,597	1,859,956	6,654,306	4,367,219	7,514,878	19,306,784	12,949,795	53,718,806	60,205	113,251,835

RHB ISLAMIC BANK
BASEL II PILLAR 3 DISCLOSURES AS AT 31 DECEMBER 2023

Table 8a: Credit Risk Exposures (Before Credit Risk Mitigation) by Remaining Maturity as at 31 December 2023

RHB Islamic Bank	One Year or Less	More Than One to Five Years	Over Five Years	Total
<u>Exposure Class</u>	RM'000	RM'000	RM'000	RM'000
<u>Exposures under Standardised Approach</u>				
Sovereigns & Central Banks	4,329,962	1,966,524	3,128,056	9,424,542
Public Sector Entities	549,817	1,055,457	6,366,071	7,971,345
Banks, Development Financial Institutions & MDBs	2,749,402	515,909	58,987	3,324,298
Takaful Cos, Securities Firms & Fund Managers	1,000	119	-	1,119
Corporates	674,363	1,271,496	188,668	2,134,527
Regulatory Retail	80,630	1,104,301	4,722,744	5,907,675
Residential Financing	31	75	17,730	17,836
Other Assets	10,606	-	62,450	73,056
Total Exposures under Standardised Approach	8,395,811	5,913,881	14,544,706	28,854,398
<u>Exposures under IRB Approach</u>				
Corporates, of which	8,469,227	10,485,391	9,673,328	28,627,946
Corporate Exposures (excluding exposures with firm size adjustments)	5,694,317	7,285,544	4,422,656	17,402,517
Corporate Exposures (with firm size adjustments)	2,605,630	2,298,442	3,547,426	8,451,498
Specialised Financing Exposures (Slotting Approach)				
Project Finance	3,188	29,526	203,241	235,955
Income Producing Real Estate	166,092	871,879	1,500,005	2,537,976
Retail, of which	531,294	6,015,176	51,534,759	58,081,229
Residential Financing Exposures	3,051	63,612	28,302,649	28,369,312
Qualifying Revolving Retail Exposures	31,700	529,362	15,153	576,215
Hire Purchase Exposures	47,254	2,509,759	7,916,597	10,473,610
Other Retail Exposures	449,289	2,912,443	15,300,360	18,662,092
Total Exposures under IRB Approach	9,000,521	16,500,567	61,208,087	86,709,175
Total Exposures under Standardised and IRB Approaches	17,396,332	22,414,448	75,752,793	115,563,573

RHB ISLAMIC BANK
BASEL II PILLAR 3 DISCLOSURES AS AT 31 DECEMBER 2023

Table 8b: Credit Risk Exposures (Before Credit Risk Mitigation) by Remaining Maturity as at 31 December 2022 (Restated)

RHB Islamic Bank	One Year or Less	More Than One to Five Years	Over Five Years	Total
<u>Exposure Class</u>	<u>RM'000</u>	<u>RM'000</u>	<u>RM'000</u>	<u>RM'000</u>
<u>Exposures under Standardised Approach</u>				
Sovereigns & Central Banks	5,936,020	1,027,462	3,183,498	10,146,980
Public Sector Entities	540,822	1,341,607	6,542,438	8,424,867
Banks, Development Financial Institutions & MDBs	2,609,666	585,349	25,629	3,220,644
Takaful Cos, Securities Firms & Fund Managers	-	-	-	-
Corporates	398,754	565,951	164,349	1,129,054
Regulatory Retail	46,300	858,454	4,154,012	5,058,766
Residential Financing	-	103	9,313	9,416
Other Assets	18,241	-	41,285	59,526
Total Exposures under Standardised Approach	9,549,803	4,378,926	14,120,524	28,049,253
<u>Exposures under IRB Approach</u>				
Corporates, of which	7,229,949	13,593,791	10,148,293	30,972,033
Corporate Exposures (excluding exposures with firm size adjustments)	3,825,722	9,927,441	5,657,788	19,410,951
Corporate Exposures (with firm size adjustments)	3,264,734	2,714,705	3,225,808	9,205,247
Specialised Financing Exposures (Slotting Approach)				
Project Finance	150	25,303	179,476	204,929
Income Producing Real Estate	139,343	926,342	1,085,221	2,150,906
Retail, of which	663,194	4,494,198	49,073,157	54,230,549
Residential Financing Exposures	3,617	57,168	24,618,176	24,678,961
Qualifying Revolving Retail Exposures	54,189	432,469	4,324	490,982
Hire Purchase Exposures	44,130	2,103,770	7,534,946	9,682,846
Other Retail Exposures	561,258	1,900,791	16,915,711	19,377,760
Total Exposures under IRB Approach	7,893,143	18,087,989	59,221,450	85,202,582
Total Exposures under Standardised and IRB Approaches	17,442,946	22,466,915	73,341,974	113,251,835

RHB ISLAMIC BANK
BASEL II PILLAR 3 DISCLOSURES AS AT 31 DECEMBER 2023

Standardised Approach for other Portfolios

The Standardised Approach is applied to portfolios that are classified as permanently exempted from the IRB approach, and those portfolios that are currently in transition to the IRB approach. Under this Standardised Approach, the risk weights are prescribed by BNM based on the asset class to which the exposure is assigned.

The following tables show the Bank's credit exposures for its portfolios with the corresponding risk weights and RWA under the Standardised Approach, after credit risk mitigation (CRM):

Table 9a: Portfolios under the Standardised Approach by Risk Weights as at 31 December 2023

RHB Islamic Bank

Exposure Class	Sovereigns & Central Banks	Public Sector Entities	Banks, Development Financial Institutions & MDBs	Takaful Cos, Securities Firms & Fund Managers	Corporates	Regulatory Retail	Residential Financing	Other Assets	Total Exposures After Credit Risk Mitigation	Total Risk-Weighted Assets
	RM'000	RM'000	RM'000	RM'000	RM'000	RM'000	RM'000	RM'000	RM'000	RM'000
Supervisory Risk Weights (%)										
0%	9,424,542	7,790,526	44,897	-	-	-	-	10,606	17,270,571	-
20%	-	108,340	3,156,785	-	1,300,018	230	-	-	4,565,373	913,075
35%	-	-	-	-	-	-	7,226	-	7,226	2,529
50%	-	-	122,616	-	171,690	9,712	10,602	-	314,620	157,310
75%	-	-	-	-	-	242,329	-	-	242,329	181,746
100%	-	-	-	1,119	532,740	5,570,962	-	62,450	6,167,271	6,167,271
150%	-	-	-	-	44	50,814	-	-	50,858	76,287
Total Exposures	9,424,542	7,898,866	3,324,298	1,119	2,004,492	5,874,047	17,828	73,056	28,618,248	7,498,218

Table 9b: Portfolios under the Standardised Approach by Risk Weights as at 31 December 2022

RHB Islamic Bank

Exposure Class	Sovereigns & Central Banks	Public Sector Entities	Banks, Development Financial Institutions & MDBs	Takaful Cos, Securities Firms & Fund Managers	Corporates	Regulatory Retail	Residential Financing	Other Assets	Total Exposures After Credit Risk Mitigation	Total Risk-Weighted Assets
	RM'000	RM'000	RM'000	RM'000	RM'000	RM'000	RM'000	RM'000	RM'000	RM'000
Supervisory Risk Weights (%)										
0%	10,146,980	7,721,251	49,358	-	-	-	-	12,017	17,929,606	-
20%	-	632,016	3,060,277	-	405,305	-	-	-	4,097,598	819,520
35%	-	-	-	-	-	-	4,940	-	4,940	1,729
50%	-	-	107,471	-	135	8,297	4,476	-	120,379	60,189
75%	-	-	-	-	-	240,367	-	-	240,367	180,275
100%	-	-	-	-	590,557	4,761,184	-	47,509	5,399,250	5,399,250
150%	-	-	234	-	2	30,421	-	-	30,657	45,986
Total Exposures	10,146,980	8,353,267	3,217,340	-	995,999	5,040,269	9,416	59,526	27,822,797	6,506,949

RHB ISLAMIC BANK
BASEL II PILLAR 3 DISCLOSURES AS AT 31 DECEMBER 2023

6.6 Use of External Ratings

For exposures such as sovereigns, corporate and banking institutions, external ratings from approved external credit assessment institutions (ECAIs), where available, are used to calculate the risk-weighted assets and regulatory capital.

The process used to map ECAIs issuer ratings or comparable ECAIs issue ratings, are in accordance to the standards prescribed by BNM. Approved ECAIs are as follows:

- Standard & Poor's (S&P);
- Moody's Investor Services (Moody's);
- Fitch Ratings (Fitch);
- Malaysian Rating Corporation Berhad (MARC);
- Rating Agency Malaysia (RAM); and
- Rating and Investment Information, Inc (R&I).

External ratings for the counterparties are determined as soon as relationship is established and these ratings are tracked and kept updated. Only publicly available credit ratings are used for regulatory risk weighting purpose.

The following tables show the Bank's credit exposures for 31 December 2023 compared with 31 December 2022, according to the ratings by ECAIs:

RHB ISLAMIC BANK
BASEL II PILLAR 3 DISCLOSURES AS AT 31 DECEMBER 2023

Table 10a: Rated Exposures According to Ratings by External Credit Assessment Institutions (ECAIs) as at 31 December 2023

RHB Islamic Bank	Moody's	Aaa to Aa3	A1 to A3	Baa1 to Ba3	B1 to C	Unrated	
	S&P	AAA to AA-	A+ to A-	BBB+ to BB-	B+ to D	Unrated	
Ratings of Corporates by Approved ECAIs	Fitch	AAA to AA-	A+ to A-	BBB+ to BB-	B+ to D	Unrated	
	RAM	AAA to AA3	A1 to A3	BBB1 to BB3	B to D	Unrated	
	MARC	AAA to AA-	A+ to A-	BBB+ to BB-	B1 to D	Unrated	
<u>Exposure Class</u>	R&I	AAA to AA-	A+ to A-	BBB+ to BB-	B+ to D	Unrated	
		RM'000	RM'000	RM'000	RM'000	RM'000	
<u>On and Off-Balance Sheet Exposures</u>							
Public Sector Entities		-	-	-	-	7,898,866	
Takaful Cos, Securities Firms & Fund Managers		-	-	-	-	1,119	
Corporates		1,300,018	171,642	-	-	532,832	
Ratings of Sovereigns and Central Banks by Approved ECAIs							
	Moody's	Aaa to Aa3	A1 to A3	Baa1 to Baa3	Ba1 to B3	Caa1 to C	Unrated
	S&P	AAA to AA-	A+ to A-	BBB+ to BBB-	BB+ to B-	CCC+ to D	Unrated
	Fitch	AAA to AA-	A+ to A-	BBB+ to BBB-	BB+ to B-	CCC+ to D	Unrated
<u>Exposure Class</u>	R&I	AAA to AA-	A+ to A-	BBB+ to BBB-	BB+ to B-	CCC+ to C	Unrated
		RM'000	RM'000	RM'000	RM'000	RM'000	RM'000
<u>On and Off-Balance Sheet Exposures</u>							
Sovereigns & Central Banks		-	9,424,542	-	-	-	-
Ratings of Banking Institutions by Approved ECAIs							
	Moody's	Aaa to Aa3	A1 to A3	Baa1 to Baa3	Ba1 to B3	Caa1 to C	Unrated
	S&P	AAA to AA-	A+ to A-	BBB+ to BBB-	BB+ to B-	CCC+ to D	Unrated
	Fitch	AAA to AA-	A+ to A-	BBB+ to BBB-	BB+ to B-	CCC+ to D	Unrated
	RAM	AAA to AA3	A1 to A3	BBB1 to BBB3	BB1 to B3	C1 to D	Unrated
	MARC	AAA to AA-	A+ to A-	BBB+ to BBB-	BB+ to B-	C+ to D	Unrated
<u>Exposure Class</u>	R&I	AAA to AA-	A+ to A-	BBB+ to BBB-	BB+ to B-	CCC+ to C	Unrated
		RM'000	RM'000	RM'000	RM'000	RM'000	RM'000
<u>On and Off-Balance Sheet Exposures</u>							
Banks, Development Financial Institutions & MDBs		2,080,042	818,686	69	-	-	425,501

RHB ISLAMIC BANK
BASEL II PILLAR 3 DISCLOSURES AS AT 31 DECEMBER 2023

Table 10b: Rated Exposures According to Ratings by External Credit Assessment Institutions (ECAIs) as at 31 December 2022

RHB Islamic Bank	Moody's	Aaa to Aa3	A1 to A3	Baa1 to Ba3	B1 to C	Unrated	
	S&P	AAA to AA-	A+ to A-	BBB+ to BB-	B+ to D	Unrated	
Ratings of Corporates by Approved ECAIs	Fitch	AAA to AA-	A+ to A-	BBB+ to BB-	B+ to D	Unrated	
	RAM	AAA to AA3	A1 to A3	BBB1 to BB3	B to D	Unrated	
	MARC	AAA to AA-	A+ to A-	BBB+ to BB-	B1 to D	Unrated	
<u>Exposure Class</u>	R&I	AAA to AA-	A+ to A-	BBB+ to BB-	B+ to D	Unrated	
		RM'000	RM'000	RM'000	RM'000	RM'000	
<u>On and Off-Balance Sheet Exposures</u>							
Public Sector Entities		87,393	518,343	-	-	7,747,531	
Takaful Cos, Securities Firms & Fund Managers		-	-	-	-	-	
Corporates		405,305	-	-	-	590,694	
Ratings of Sovereigns and Central Banks by Approved ECAIs							
	Moody's	Aaa to Aa3	A1 to A3	Baa1 to Baa3	Ba1 to B3	Caa1 to C	Unrated
	S&P	AAA to AA-	A+ to A-	BBB+ to BBB-	BB+ to B-	CCC+ to D	Unrated
	Fitch	AAA to AA-	A+ to A-	BBB+ to BBB-	BB+ to B-	CCC+ to D	Unrated
<u>Exposure Class</u>	R&I	AAA to AA-	A+ to A-	BBB+ to BBB-	BB+ to B-	CCC+ to C	Unrated
		RM'000	RM'000	RM'000	RM'000	RM'000	RM'000
<u>On and Off-Balance Sheet Exposures</u>							
Sovereigns & Central Banks		-	10,146,980	-	-	-	-
Ratings of Banking Institutions by Approved ECAIs							
	Moody's	Aaa to Aa3	A1 to A3	Baa1 to Baa3	Ba1 to B3	Caa1 to C	Unrated
	S&P	AAA to AA-	A+ to A-	BBB+ to BBB-	BB+ to B-	CCC+ to D	Unrated
	Fitch	AAA to AA-	A+ to A-	BBB+ to BBB-	BB+ to B-	CCC+ to D	Unrated
	RAM	AAA to AA3	A1 to A3	BBB1 to BBB3	BB1 to B3	C1 to D	Unrated
	MARC	AAA to AA-	A+ to A-	BBB+ to BBB-	BB+ to B-	C+ to D	Unrated
<u>Exposure Class</u>	R&I	AAA to AA-	A+ to A-	BBB+ to BBB-	BB+ to B-	CCC+ to C	Unrated
		RM'000	RM'000	RM'000	RM'000	RM'000	RM'000
<u>On and Off-Balance Sheet Exposures</u>							
Banks, Development Financial Institutions & MDBs		2,047,978	523,348	1,190	-	-	644,824

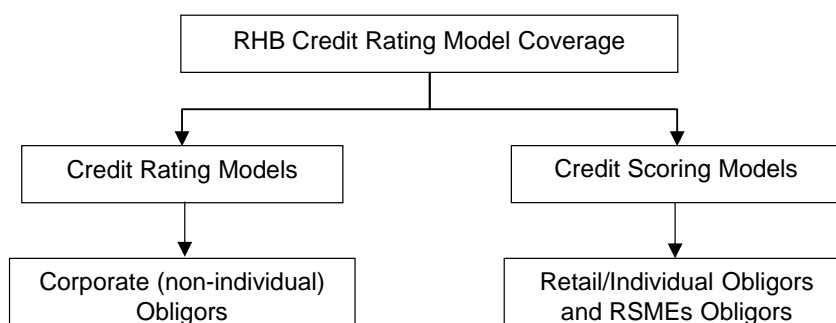
6.7 Internal Credit Rating Models

Internal credit rating models are an integral part of the Bank’s credit risk management, decision-making process, and regulatory capital calculations. These internal credit rating models are developed by Enterprise Risk Management with active participation by the relevant credit experts from the Bank’s functional units and/or business units. Group Risk Modelling also continuously explores other techniques or methodologies to enhance the model development process such as implementation of artificial intelligence or machine learning.

Internal rating model development, validation and implementation process have been established to govern the development and validation of rating models and the application of these models. Specifically, all newly developed models prior to implementation, material changes of the rating systems and validation results must be endorsed by GCRC and approved by Board Risk Committee of RHB Islamic Bank (BRC-i). All models are also subject to independent validation by the Model Risk Management before implementation to ensure that all aspects of the model development process have been satisfied. In addition, the models are also subject to annual review and independent validation by the Model Risk Management to ensure that they are performing as expected.

Credit risk/rating models can be broadly classified into:

- Credit Rating Models
- Credit Scoring Models



The credit rating models for corporate (or non-individual) obligors are used to risk rate the creditworthiness of the corporate obligors/guarantors/debt issuers based on their financial standing (such as gearing, expenses and profit) and qualitative aspects (such as management effectiveness and industry environment). Different rating models will be applied subject to the obligor’s asset and sales volume to create further risk differentiation.

The credit scoring models are for large volume of exposures that are managed on a portfolio basis, which includes program financing for RSMEs. These models are developed through statistical modelling and applied onto the portfolio accordingly. For portfolios where data are readily available or when more granular segmentation is required to support business strategy, more models will be developed and deployed.

Application of Internal Ratings

The three components of risk parameters, the PD, LGD and EAD are used in variety of applications that measure credit risk across the entire portfolio.

- Credit Approval : PD models are used in the credit approval process in both retail and non-retail portfolios. In high volume retail portfolios, application scorecard, behaviour scorecard and customer centric scorecard are used as one of the risk management tools.
- Policy : Policies are established to govern the use of ratings in credit decisions and monitoring.
- Reporting : Model performance monitoring report is submitted to senior management on periodic basis.
- Capital Management : The capital management and allocation plan takes into consideration the projected RWA computed based on internal rating.
- Risk Limits : The internal ratings are used in establishing the Group’s various internal limits (such as industry risk limit).
- Risk Reward and Pricing : PD, EAD and LGD metrics are used to assess profitability of deals to allow for risk-informed pricing considerations and strategic decisions.

RHB ISLAMIC BANK
BASEL II PILLAR 3 DISCLOSURES AS AT 31 DECEMBER 2023

F-IRB for Non-Retail Portfolios

The major non-retail portfolios of the Bank are on the Foundation Internal Ratings-Based (F-IRB) approach for regulatory capital requirements. Specialised financing uses supervisory slotting criteria. Under this approach, internal rating models are used to estimate the PD for each obligor, while the LGD and EAD parameters are prescribed by BNM. The PD models are developed with combination of quantitative and qualitative factors.

A-IRB for Retail Portfolios

For regulatory capital requirements, the Bank has adopted the Advanced Internal Ratings-Based (A-IRB) approach for the retail portfolios, i.e. residential home financing, credit cards, auto financing, commercial property financing, personal financing, term financing collateralised by ASB and RSMEs. The Bank is continuously working on migrating its relevant significant portfolio under the Standardised Approach towards IRB compliance. The risk estimates – PD, LGD and EAD; are calibrated for these retail portfolios/pools. In addition, credit application scorecard, behavioural scorecard and customer centric scorecard are developed and implemented for use in credit approval decision support such as limit setting, credit score cut-off and approval, monitoring and reporting.

The following tables set out:

- Exposures subject to the Supervisory Risk Weights;
- Exposures under the IRB Approach by PD Band, Exposure Weighted Average Loss Given Default (LGD) and Exposure Weighted Average Risk Weights;
- Exposures under the A-IRB Approach by EL Range and Exposure Weighted Average Risk Weights; and
- Exposures under IRB Approach by Actual Losses versus Expected Losses.

RHB ISLAMIC BANK
BASEL II PILLAR 3 DISCLOSURES AS AT 31 DECEMBER 2023

Table 11a: Exposures Subject to the Supervisory Risk Weights under the IRB Approach as at 31 December 2023

RHB Islamic Bank

Supervisory Categories/Risk Weights	Exposure After Credit Risk Mitigation					Total
	Strong	Good	Satisfactory	Weak	Default	
	RM'000	RM'000	RM'000	RM'000	RM'000	RM'000
Specialised Financing Exposures						
Project Finance	5,140	183,658	19,099	-	3,099	210,996
Income Producing Real Estate	565,760	1,592,943	-	-	-	2,158,703
Total Exposures After Credit Risk Mitigation	570,900	1,776,601	19,099	-	3,099	2,369,699
Total Risk-Weighted Assets	375,905	1,510,227	21,963	-	-	1,908,095

Table 11b: Exposures Subject to the Supervisory Risk Weights under the IRB Approach as at 31 December 2022

RHB Islamic Bank

Supervisory Categories/Risk Weights	Exposure After Credit Risk Mitigation					Total
	Strong	Good	Satisfactory	Weak	Default	
	RM'000	RM'000	RM'000	RM'000	RM'000	RM'000
Specialised Financing Exposures						
Project Finance	-	64,073	131,296	-	-	195,369
Income Producing Real Estate	345,196	1,436,904	44,356	-	-	1,826,456
Total Exposures After Credit Risk Mitigation	345,196	1,500,977	175,652	-	-	2,021,825
Total Risk-Weighted Assets	226,270	1,264,056	202,001	-	-	1,692,327

RHB ISLAMIC BANK
BASEL II PILLAR 3 DISCLOSURES AS AT 31 DECEMBER 2023

Table 12a: Exposures under the IRB Approach by PD Band, Exposure Weighted Average Loss Given Default (LGD) and Exposure Weighted Average Risk Weight as at 31 December 2023

RHB Islamic Bank	Exposure At Default After Credit Risk Mitigation	Exposure Weighted Average LGD	Exposure Weighted Average Risk Weight	Undrawn Commitments
<u>Probability of Default (PD) Range (%)</u>	RM'000	%	%	RM'000
<u>Non Retail Exposures</u>				
Corporate Exposures (excluding exposures with firm size adjustments)				
0 to 1	11,986,716	41.59	55.39	1,239,559
>1 to 4	1,323,152	34.91	82.72	562,435
>4 to 12	3,125,882	6.12	25.52	1,434,213
>12 to <100	52,809	40.34	210.92	6,695
Default or 100	1,318,190	44.21	0.26	-
Total Corporate Exposures (excluding exposures with firm size adjustments)	17,806,749			3,242,902
Corporate Exposures (with firm size adjustments)				
0 to 1	3,959,171	38.45	41.55	1,265,396
>1 to 4	2,853,144	29.20	57.55	414,189
>4 to 12	702,815	34.35	106.16	194,288
>12 to <100	439,520	32.70	131.77	23,460
Default or 100	496,848	21.76	0.00	-
Total Corporate Exposures (with firm size adjustments)	8,451,498			1,897,333
Total Non Retail Exposures	26,258,247			5,140,235
<u>Retail Exposures</u>				
Residential Financing Exposures				
0 to 3	25,869,558	16.63	11.18	413,775
>3 to 10	894,975	16.71	48.23	8,565
>10 to 20	217,777	16.80	80.80	25
>20 to <100	838,449	16.68	88.97	857
Default or 100	548,553	16.68	87.36	1,083
Total Residential Financing Exposures	28,369,312			424,305
Qualifying Revolving Retail Exposures				
0 to 3	289,608	59.08	24.33	424,126
>3 to 10	208,920	57.69	68.92	88,694
>10 to 20	46,146	55.64	117.63	16,693
>20 to <100	17,488	54.84	156.30	3,548
Default or 100	14,053	49.33	125.80	-
Total Qualifying Revolving Retail Exposures	576,215			533,061
Hire Purchase Exposures				
0 to 3	9,972,349	44.00	28.48	-
>3 to 10	218,790	45.78	72.70	-
>10 to 20	173,574	44.99	99.79	-
>20 to <100	42,128	45.22	105.73	-
Default or 100	66,769	45.22	43.43	-
Total Hire Purchase Exposures	10,473,610			-
Other Retail Exposures				
0 to 3	14,388,391	18.05	14.50	4,575,864
>3 to 10	3,101,006	7.42	11.05	63,329
>10 to 20	296,804	14.20	28.78	10,998
>20 to <100	505,278	9.13	22.96	20,514
Default or 100	370,613	21.43	23.21	13,666
Total Other Retail Exposures	18,662,092			4,684,371
Total Retail Exposures	58,081,229			5,641,737
Total Non Retail & Retail Exposures under IRB Approach	84,339,476			10,781,972

RHB ISLAMIC BANK
BASEL II PILLAR 3 DISCLOSURES AS AT 31 DECEMBER 2023

Table 12b: Exposures under the IRB Approach by PD Band, Exposure Weighted Average Loss Given Default (LGD) and Exposure Weighted Average Risk Weight as at 31 December 2022

RHB Islamic Bank	Exposure At Default After Credit Risk Mitigation RM'000	Exposure Weighted Average LGD %	Exposure Weighted Average Risk Weight %	Undrawn Commitments RM'000
<u>Probability of Default (PD) Range (%)</u>				
<u>Non Retail Exposures</u>				
Corporate Exposures (excluding exposures with firm size adjustments)				
0 to 1	12,533,247	42.39	52.70	1,362,225
>1 to 4	3,444,347	26.43	66.11	643,585
>4 to 12	2,513,190	3.69	13.03	1,110,910
>12 to <100	5,573	23.58	128.72	504
Default or 100	1,248,604	44.33	0.15	-
Total Corporate Exposures (excluding exposures with firm size adjustments)	19,744,961			3,117,224
Corporate Exposures (with firm size adjustments)				
0 to 1	3,905,072	36.72	40.47	1,178,845
>1 to 4	2,722,345	31.72	69.20	499,657
>4 to 12	1,722,767	9.37	28.35	147,681
>12 to <100	675,207	29.56	130.78	36,159
Default or 100	179,856	36.36	0.00	-
Total Corporate Exposures (with firm size adjustments)	9,205,247			1,862,342
Total Non Retail Exposures	28,950,208			4,979,566
<u>Retail Exposures</u>				
Residential Financing Exposures				
0 to 3	22,766,438	16.61	11.72	422,010
>3 to 10	820,567	16.74	48.29	10,085
>10 to 20	140,473	16.58	79.82	259
>20 to <100	522,148	16.63	87.89	185
Default or 100	429,335	16.76	88.32	1,398
Total Residential Financing Exposures	24,678,961			433,937
Qualifying Revolving Retail Exposures				
0 to 3	254,642	58.62	24.07	370,674
>3 to 10	166,135	57.20	67.95	64,910
>10 to 20	39,012	54.83	114.76	10,939
>20 to <100	18,209	54.54	155.24	3,727
Default or 100	12,984	50.22	106.39	-
Total Qualifying Revolving Retail Exposures	490,982			450,250
Hire Purchase Exposures				
0 to 3	9,236,125	43.91	28.13	-
>3 to 10	188,450	45.75	72.65	-
>10 to 20	168,740	44.77	99.31	-
>20 to <100	38,432	44.97	105.15	-
Default or 100	51,099	45.23	61.30	-
Total Hire Purchase Exposures	9,682,846			-
Other Retail Exposures				
0 to 3	14,841,988	17.48	14.05	4,853,169
>3 to 10	3,534,813	6.42	9.53	107,888
>10 to 20	288,439	13.26	27.16	10,735
>20 to <100	476,291	7.16	17.89	15,682
Default or 100	236,229	22.47	44.26	8,428
Total Other Retail Exposures	19,377,760			4,995,902
Total Retail Exposures	54,230,549			5,880,089
Total Non Retail & Retail Exposures under IRB Approach	83,180,757			10,859,655

RHB ISLAMIC BANK
BASEL II PILLAR 3 DISCLOSURES AS AT 31 DECEMBER 2023

Table 13a: Exposures under the A-IRB Approach by EL Range and Exposure Weighted Average Risk Weight as at 31 December 2023

RHB Islamic Bank	Exposure At Default After Credit Risk Mitigation	Exposure Weighted Average Risk Weights	Undrawn Commitments
<u>Expected Losses (EL) Range (%)</u>	<u>RM'000</u>	<u>%</u>	<u>RM'000</u>
<u>Retail Exposures</u>			
Residential Financing Exposures			
0 to 1	26,757,292	12.45	422,914
>1 to 10	1,169,594	110.12	1,248
>10 to <100	427,299	25.01	143
100	15,127	0.00	-
Total Residential Financing Exposures	28,369,312		424,305
Qualifying Revolving Retail Exposures			
0 to 1	252,361	22.50	394,710
>1 to 10	290,696	72.09	133,857
>10 to <100	33,155	142.91	4,494
100	3	0.00	-
Total Qualifying Revolving Retail Exposures	576,215		533,061
Hire Purchase Exposures			
0 to 1	9,743,885	27.68	-
>1 to 10	620,829	76.44	-
>10 to <100	95,169	77.27	-
100	13,727	0.00	-
Total Hire Purchase Exposures	10,473,610		-
Other Retail Exposures			
0 to 1	17,479,995	13.07	4,628,875
>1 to 10	770,219	46.56	38,254
>10 to <100	341,259	21.53	17,099
100	70,619	0.00	143
Total Other Retail Exposures	18,662,092		4,684,371
Total Retail Exposures	58,081,229		5,641,737

RHB ISLAMIC BANK
BASEL II PILLAR 3 DISCLOSURES AS AT 31 DECEMBER 2023

Table 13b: Exposures under the A-IRB Approach by EL Range and Exposure Weighted Average Risk Weight as at 31 December 2022

RHB Islamic Bank	Exposure At Default After Credit Risk Mitigation	Exposure Weighted Average Risk Weights	Undrawn Commitments
<u>Expected Losses (EL) Range (%)</u>	<u>RM'000</u>	<u>%</u>	<u>RM'000</u>
<u>Retail Exposures</u>			
Residential Financing Exposures			
0 to 1	23,583,071	13.04	433,018
>1 to 10	771,665	112.72	758
>10 to <100	312,506	22.51	155
100	11,719	0.00	6
Total Residential Financing Exposures	24,678,961		433,937
Qualifying Revolving Retail Exposures			
0 to 1	222,902	22.29	343,204
>1 to 10	235,942	71.15	102,744
>10 to <100	32,138	135.35	4,302
100	-	0.00	-
Total Qualifying Revolving Retail Exposures	490,982		450,250
Hire Purchase Exposures			
0 to 1	9,027,627	27.34	-
>1 to 10	565,690	76.81	-
>10 to <100	79,275	90.47	-
100	10,254	0.00	-
Total Hire Purchase Exposures	9,682,846		-
Other Retail Exposures			
0 to 1	18,496,110	12.46	4,941,147
>1 to 10	657,488	49.03	41,945
>10 to <100	170,871	36.66	12,301
100	53,291	0.00	509
Total Other Retail Exposures	19,377,760		4,995,902
Total Retail Exposures	54,230,549		5,880,089

RHB ISLAMIC BANK
BASEL II PILLAR 3 DISCLOSURES AS AT 31 DECEMBER 2023

Table 14: Exposures under IRB Approach by Actual Losses versus Expected Losses

RHB Islamic Bank	Actual Losses as at	Expected Losses as at	Actual Losses as at	Expected Losses as at
<u>Exposure Class</u>	<u>31 December 2023</u>	<u>31 December 2022</u>	<u>31 December 2022</u>	<u>31 December 2021</u>
	RM'000	RM'000	RM'000	RM'000
Corporates, of which				
Corporate Exposures (excluding exposures with firm size adjustments)	-	32,666	-	36,104
Corporate Exposures (with firm size adjustments)	82,039	80,766	23,479	68,319
Specialised Financing Exposures (Slotting Approach)				
- Project Finance	-	4,054	-	392
- Income Producing Real Estate	-	11,276	-	9,805
Retail, of which				
Residential Financing Exposures	47,501	60,464	39,147	51,418
Qualifying Revolving Retail Exposures	7,401	12,405	6,276	11,394
Hire Purchase Exposures	37,230	52,671	23,894	54,044
Other Retail Exposures	57,253	51,527	27,735	48,701
Total	231,424	305,829	120,531	280,177

Actual losses are derived from impairment allowances and write-offs during the year, while expected losses (EL) measures the loss expected from the Bank's credit exposures as at 31 December of the preceding year.

A comparison of actual losses and EL provides some insight of the predictive power of the IRB approach models used by the Bank; however the two metrics are not directly comparable due to the differences in methodology. In particular, the EL used in this comparison is the forecast credit loss from the counterparty defaults of the Bank's exposures over a one-year period and is computed as the product of PD, LGD and EAD for the Bank's exposures as at 31 December of the preceding year.

RHB ISLAMIC BANK
BASEL II PILLAR 3 DISCLOSURES AS AT 31 DECEMBER 2023

The following tables show the credit risk mitigation of portfolios under the Standardised Approach and IRB Approach respectively as at 31 December 2023 compared with 31 December 2022:

Table 15a: Credit Risk Mitigation of Portfolios under the Standardised Approach as at 31 December 2023

RHB Islamic Bank	Gross Exposures Before Credit Risk Mitigation	Gross Exposures Covered by Guarantees/ Credit Derivatives	Gross Exposures Covered by Eligible Financial Collateral
<u>Exposure Class</u>	<u>RM'000</u>	<u>RM'000</u>	<u>RM'000</u>
<u>On-Balance Sheet Exposures</u>			
Sovereigns & Central Banks	9,424,542	-	-
Public Sector Entities	7,344,700	7,215,855	71,600
Banks, Development Financial Institutions & MDBs	2,855,927	44,896	-
Takaful Cos, Securities Firms & Fund Managers	119	-	-
Corporates	1,953,649	-	11,881
Regulatory Retail	5,779,404	230	14,816
Residential Financing	17,809	-	8
Other Assets	73,056	-	-
Defaulted Exposures	164,759	-	101,120
Total On-Balance Sheet Exposures	27,613,965	7,260,981	199,425
<u>Off-Balance Sheet Exposures</u>			
OTC Derivatives	520,628	-	80
Off-balance sheet exposures other than OTC derivatives or credit derivatives	719,805	574,671	36,645
Defaulted Exposures	-	-	-
Total Off-Balance Sheet Exposures	1,240,433	574,671	36,725
Total On and Off-Balance Sheet Exposures	28,854,398	7,835,652	236,150

RHB ISLAMIC BANK
BASEL II PILLAR 3 DISCLOSURES AS AT 31 DECEMBER 2023

Table 15b: Credit Risk Mitigation of Portfolios under the Standardised Approach as at 31 December 2022

RHB Islamic Bank	Gross Exposures Before Credit Risk Mitigation	Gross Exposures Covered by Guarantees/ Credit Derivatives	Gross Exposures Covered by Eligible Financial Collateral
<u>Exposure Class</u>	<u>RM'000</u>	<u>RM'000</u>	<u>RM'000</u>
<u>On-Balance Sheet Exposures</u>			
Sovereigns & Central Banks	10,146,980	-	-
Public Sector Entities	7,842,192	7,187,830	71,600
Banks, Development Financial Institutions & MDBs	2,689,740	49,358	-
Takaful Cos, Securities Firms & Fund Managers	-	-	-
Corporates	1,004,725	-	109,834
Regulatory Retail	5,007,412	-	10,186
Residential Financing	9,412	-	-
Other Assets	59,526	-	-
Defaulted Exposures	41,379	-	10
Total On-Balance Sheet Exposures	26,801,366	7,237,188	191,630
<u>Off-Balance Sheet Exposures</u>			
OTC Derivatives	579,789	-	3,304
Off-balance sheet exposures other than OTC derivatives or credit derivatives	668,098	533,421	31,522
Defaulted Exposures	-	-	-
Total Off-Balance Sheet Exposures	1,247,887	533,421	34,826
Total On and Off-Balance Sheet Exposures	28,049,253	7,770,609	226,456

RHB ISLAMIC BANK
BASEL II PILLAR 3 DISCLOSURES AS AT 31 DECEMBER 2023

Table 16a: Credit Risk Mitigation of Portfolios under the IRB Approach as at 31 December 2023

RHB Islamic Bank	Gross Exposures Before Credit Risk Mitigation	Gross Exposures Covered by Guarantees/ Credit Derivatives	Gross Exposures Covered by Eligible Financial Collateral	Gross Exposures Covered by Other Eligible Collateral
<u>Exposure Class</u>	<u>RM'000</u>	<u>RM'000</u>	<u>RM'000</u>	<u>RM'000</u>
<u>On-Balance Sheet Exposures</u>				
Corporates, of which	24,307,766	5,529,114	1,386,060	4,996,148
Corporate Exposures (excluding exposures with firm size adjustments)	14,689,653	4,416,177	424,013	1,905,397
Corporate Exposures (with firm size adjustments)	7,230,616	823,436	962,047	3,090,751
Specialised Financing Exposures (Slotting Approach)				
Project Finance	168,516	7,487	-	-
Income Producing Real Estate	2,218,981	282,014	-	-
Retail, of which	52,067,406	69,599	4,580,440	31,962,076
Residential Financing Exposures	27,397,537	-	-	27,353,377
Qualifying Revolving Retail Exposures	348,134	-	-	-
Hire Purchase Exposures	10,406,841	-	-	-
Other Retail Exposures	13,914,894	69,599	4,580,440	4,608,699
Defaulted Exposures	2,801,531	18,089	233,107	731,557
Total On-Balance Sheet Exposures	79,176,703	5,616,802	6,199,607	37,689,781
<u>Off-Balance Sheet Exposures</u>				
OTC Derivatives	19,744	-	-	-
Off-balance sheet exposures other than OTC derivatives or credit derivatives	7,496,134	920,062	207,216	4,212,357
Defaulted Exposures	16,594	-	-	14,311
Total Off-Balance Sheet Exposures	7,532,472	920,062	207,216	4,226,668
Total On and Off-Balance Sheet Exposures	86,709,175	6,536,864	6,406,823	41,916,449

RHB ISLAMIC BANK
BASEL II PILLAR 3 DISCLOSURES AS AT 31 DECEMBER 2023

Table 16b: Credit Risk Mitigation of Portfolios under the IRB Approach as at 31 December 2022

RHB Islamic Bank	Gross Exposures Before Credit Risk Mitigation	Gross Exposures Covered by Guarantees/ Credit Derivatives	Gross Exposures Covered by Eligible Financial Collateral	Gross Exposures Covered by Other Eligible Collateral
<u>Exposure Class</u>	<u>RM'000</u>	<u>RM'000</u>	<u>RM'000</u>	<u>RM'000</u>
<u>On-Balance Sheet Exposures</u>				
Corporates, of which	26,887,675	6,737,857	1,322,972	4,851,441
Corporate Exposures (excluding exposures with firm size adjustments)	16,670,314	4,446,560	180,901	2,063,325
Corporate Exposures (with firm size adjustments)	8,201,556	2,015,855	1,142,071	2,788,116
Specialised Financing Exposures (Slotting Approach)				
Project Finance	139,096	-	-	-
Income Producing Real Estate	1,876,709	275,442	-	-
Retail, of which	48,156,300	52,754	5,397,906	28,316,218
Residential Financing Exposures	23,817,087	-	-	23,778,333
Qualifying Revolving Retail Exposures	288,486	-	-	-
Hire Purchase Exposures	9,631,747	-	-	-
Other Retail Exposures	14,418,980	52,754	5,397,906	4,537,885
Defaulted Exposures	2,147,835	11,373	12,185	606,691
Total On-Balance Sheet Exposures	77,191,810	6,801,984	6,733,063	33,774,350
<u>Off-Balance Sheet Exposures</u>				
OTC Derivatives	15,148	-	-	-
Off-balance sheet exposures other than OTC derivatives or credit derivatives	7,985,352	871,926	193,371	4,583,221
Defaulted Exposures	10,272	-	-	9,362
Total Off-Balance Sheet Exposures	8,010,772	871,926	193,371	4,592,583
Total On and Off-Balance Sheet Exposures	85,202,582	7,673,910	6,926,434	38,366,933

RHB ISLAMIC BANK
BASEL II PILLAR 3 DISCLOSURES AS AT 31 DECEMBER 2023

6.8 Impairment Allowances for Financing

The Group adopts BNM's guidelines on Financial Reporting. The principles in these guidelines are in line with the Malaysian Financial Reporting Standards 9 (MFRS 9), which is in compliance with the International Financial Reporting Standards framework.

MFRS 9 impairment model requires the recognition of expected credit loss (ECL) for all financial assets, except for financial assets classified or designated as Fair Value Through Profit & Loss or FVTPL and equity securities classified under Fair Value through Other Comprehensive Income or FVOCI, which are not subject to impairment assessment. Off-balance sheet items that are subject to ECL include financial guarantees and undrawn financing commitments.

MFRS 9 does not distinguish between individual assessment and collective assessment. The Group first assess whether objective evidence of impairment exists for financial assets which are individually significant. If the Group determine that objective evidence of impairment exists, i.e. credit impaired, for an individually assessed financial asset, a lifetime ECL will be recognised for impairment loss which has been incurred. Financial assets which are individually significant but non-impaired and not individually significant are grouped on the basis of similar credit risk characteristics (such as credit quality, instrument type, credit risk ratings, credit utilisation, level of collateralisation and other relevant factors) for collective assessment. Collectively, the individual assessment allowance and collective assessment allowance form the total expected credit allowance for the Group.

ECL will be assessed using an approach which classifies financial assets into three stages which reflects the change in credit quality of the financial assets since initial recognition:

Stage 1: 12 months ECL – not credit impaired

For credit exposures where there has not been a significant increase in credit risk since initial recognition and that are not credit impaired upon origination, the ECL associated with the probability of default events occurring within the next 12 months will be recognised.

Stage 2: Lifetime ECL – not credit impaired

For credit exposures where there has been a significant increase in credit risk since initial recognition but that are not credit impaired, the ECL associated with the probability of default events occurring within the lifetime ECL will be recognised.

Stage 3: Lifetime ECL – credit impaired

Financial assets are assessed as credit impaired when one or more objective evidence of defaults that have a detrimental impact on the estimated future cashflows of that asset have occurred. For financial assets that have become credit impaired, a lifetime ECL will be recognised.

The changes in ECL between two-periods will be recognised in profit and loss.

The assessment of significant deterioration in credit risk since initial recognition is key in establishing the point of switching between the requirement to measure an allowance based on 12-month ECL and one that is based on lifetime ECL. The quantitative and qualitative assessments are required to estimate the significant increase in credit risk by comparing the risk of a default occurring on the financial assets as at reporting date with the risk of default occurring on the financial assets as at the date of initial recognition. The assessment of credit risk, as well as the estimation of ECL, are required to be unbiased, probability weighted and should incorporate all available information which is relevant to the assessment, including information about past events, current conditions and reasonable and supportable forecasts of future events and economic conditions at the reporting date. The measurement of ECL is based on the discounted products of the PD, LGD and EAD models. Certain ECL models are leveraging on the existing Group's Basel II Internal Ratings-Based model, where feasible or available, with necessary adjustment to meet MFRS 9 requirements.

Individual Assessment - Impairment Triggers

The customer assessed under Impairment Allowances (IA) shall be classified as impaired under any one of the following situations:

1. When the principal or profit or both, of any facility(s) of the customer is past due for 90 days or 3 months and above.
2. In the case of revolving facilities (e.g. overdraft facilities), the customer of the facility shall be classified as impaired where the outstanding amount has remained in excess of the approved limit for 90 days or 3 months and above.
3. Where the amount is past due or the outstanding amount has been in excess of the approved limit for less than 90 days or 3 months, the financing exhibits weaknesses (refer to impairment triggers) that would render it to be classified as impaired.
4. Where payments of the financing are scheduled on intervals of 3 months or longer, the customer is classified as impaired as soon as a default occurs.
5. Upon occurrence of any one Mandatory Status Triggers (MSTs), both Ancillary Status Trigger (AST) 1 and AST 4 or any three ASTs and above. These MSTs and ASTs are pre-defined trigger events approved by the Group to facilitate impairment classification.
6. In the case of share margin facilities, the customer shall be classified as impaired where the force selling ratio is triggered and after a period of time after force selling has commenced or where margin of finance exceeds a set threshold above the force selling ratio.

Note:

For R&R facilities, the customer shall be classified as impaired in accordance with paras 1 to 4 above based on the revised or restructured terms.

Individual Impairment Provisions

Customers under individual assessment and triggered either by any one MSTs, both AST 1 and AST 4, or any three ASTs and above will be classified as impaired. Consequently, impairment assessment is to be carried out on these impaired customers, based on reasonable and well documented estimates of the future cashflows/realisations of collateral that is expected to recover from the impaired customers i.e. net present value of future cashflows are discounted based on original effective profit rates and compared against carrying amount. Any impairment on the shortfalls will be provided in full immediately.

Re-classification and Write Back of Impairment Provision

An impaired customer may be re-classified as a non-impaired status under the following situations:

1. When the financing payment of the impaired customer has improved with the principal or profit or both, of its facilities with the Bank being past due less than 90 days or 3 months.
2. Where the customer exhibits weakness(es) that render it to be classified as impaired, even though the financing is past-due less than 90 days or 3 months, such customers may be reclassified as non-impaired status when these weaknesses have been subsequently addressed or resolved.
3. Where the customer has been individually assessed as impaired due to either any one MSTs, both AST 1 and AST 4, or any three and above, the customer may be reclassified as non-impaired status when these triggers have since been addressed and resolved.
4. For customer with R&R facilities - when the customer has complied with the revised repayment terms under cooling period requirement.
5. When the margin account's equity exceeds 130% of the outstanding balance, as determined in accordance with Chapter 7 Rule 7.30 of Bursa Malaysia Securities Berhad at the end of the calendar month of that occurring.

Write-Off of Impaired Financing

The policy of writing off impaired financial assets is intended to provide a timely and consistent methodology for financial assets to be written off, and to reflect the true value of assets in the books of the Bank.

1. All impaired financial assets which are deemed irrecoverable, worthless, slim in prospect of recovery, or under approved composite settlement schemes, may be recommended for write off.
2. Accelerated write-off based on time based approach is allowed for Retail and programmed impaired financial assets.
3. Partial write-offs of impaired financial assets is permitted for the shortfall portion in outstanding balance over the security value which is uncollectible and worthless; and the Bank is in the final stage of realising the security/collateral; or in the case of approved settlement arrangement, the waiver portion.

RHB ISLAMIC BANK
BASEL II PILLAR 3 DISCLOSURES AS AT 31 DECEMBER 2023

The following tables show the impaired and past due financing and allowance for credit losses by industry sector as at 31 December 2023 compared with 31 December 2022:

Table 17a: Impaired and Past Due Financing and Allowance for Credit Losses by Industry Sector as at 31 December 2023

RHB Islamic Bank			Allowance
<u>Industry Sector</u>	<u>Impaired</u>	<u>Past Due</u>	<u>for</u>
	<u>Financing</u>	<u>Financing</u>	<u>Credit Losses</u>
	<u>RM'000</u>	<u>RM'000</u>	<u>RM'000</u>
Agriculture	-	19,600	8,613
Mining & Quarrying	5,248	-	574
Manufacturing	22,571	31,250	24,480
Electricity, Gas & Water Supply	5,781	62	3,517
Construction	53,955	19,864	47,259
Wholesale, Retail Trade, Restaurants & Hotels	67,882	63,898	72,872
Transport, Storage & Communication	460,777	5,155	111,945
Finance, Takaful, Real Estate & Business	64,751	32,002	40,844
Education, Health & Others	94,787	65,695	25,559
Household	441,101	2,630,258	306,144
Others	-	324,436	906
Total	<u>1,216,853</u>	<u>3,192,220</u>	<u>642,713</u>

Table 17b: Impaired and Past Due Financing and Allowance for Credit Losses by Industry Sector as at 31 December 2022

RHB Islamic Bank			Allowance
<u>Industry Sector</u>	<u>Impaired</u>	<u>Past Due</u>	<u>for</u>
	<u>Financing</u>	<u>Financing</u>	<u>Credit Losses</u>
	<u>RM'000</u>	<u>RM'000</u>	<u>RM'000</u>
Agriculture	729	656	38,278
Mining & Quarrying	4,833	-	2,863
Manufacturing	21,122	9,755	27,409
Electricity, Gas & Water Supply	9,954	-	5,876
Construction	58,085	35,050	54,807
Wholesale, Retail Trade, Restaurants & Hotels	47,800	31,470	168,552
Transport, Storage & Communication	14,284	4,023	113,025
Finance, Takaful, Real Estate & Business	39,879	26,100	98,950
Education, Health & Others	82,623	22,289	4,632
Household	321,179	2,114,865	238,342
Others	-	17,922	29,848
Total	<u>600,488</u>	<u>2,262,130</u>	<u>782,582</u>

RHB ISLAMIC BANK
BASEL II PILLAR 3 DISCLOSURES AS AT 31 DECEMBER 2023

The following table shows the charges/(write back) and write-offs for financing impairment by industry sector as at 31 December 2023 compared with 31 December 2022:

Table 18: Net Charges/(Write back) and Write-Offs for Financing Impairment by Industry Sector

RHB Islamic Bank	Twelve Months Period Ended 2023		Twelve Months Period Ended 2022	
	Net Charges/ (Write back) for Lifetime ECL Credit Impaired (Stage 3) RM'000	Write-Offs for Lifetime ECL Credit Impaired (Stage 3) RM'000	Net Charges/ (Write back) for Lifetime ECL Credit Impaired (Stage 3) RM'000	Write-Offs for Lifetime ECL Credit Impaired (Stage 3) RM'000
<u>Industry Sector</u>				
Agriculture	86	(97)	27	-
Mining & Quarrying	148	-	-	-
Manufacturing	5,862	(7,909)	391	(2,760)
Electricity, Gas & Water Supply	977	(3,372)	(422)	-
Construction	5,033	(5,793)	6,144	(1,812)
Wholesale, Retail Trade, Restaurants & Hotels	9,113	(4,000)	6,057	(2,800)
Transport, Storage & Communication	88,948	(1,146)	907	(535)
Finance, Takaful, Real Estate & Business	5,738	(5,357)	6,683	(3,826)
Education, Health & Others	(4,712)	(45)	4	-
Household	125,405	(99,332)	88,992	(50,682)
Others	(6,608)	(49)	21,942	(7)
Total	229,990	(127,100)	130,725	(62,422)

RHB ISLAMIC BANK
BASEL II PILLAR 3 DISCLOSURES AS AT 31 DECEMBER 2023

The following tables show the movement in financing allowance for credit losses as at 31 December 2023 compared with 31 December 2022:

Table 19a: Movement in Financing Allowance for Credit Losses as at 31 December 2023

RHB Islamic Bank	12-month	Lifetime ECL	Lifetime ECL	Total
	ECL	Not Credit	Credit	
	(Stage 1)	(Stage 2)	(Stage 3)	
	RM'000	RM'000	RM'000	RM'000
Balance as at the beginning of the financial year	156,445	374,072	252,065	782,582
Changes due to financial assets recognised in the opening balance that have been:				
- Transferred to 12-month ECL (Stage 1)	59,298	(52,584)	(6,714)	-
- Transferred to Lifetime ECL not credit impaired (Stage 2)	(6,750)	27,317	(20,567)	-
- Transferred to Lifetime ECL credit impaired (Stage 3)	(921)	(40,271)	41,192	-
	51,627	(65,538)	13,911	-
Changes in credit risk	(106,382)	(128,189)	229,378	(5,193)
Purchases and origination	22,689	4,983	3,987	31,659
Bad debts written off	-	-	(127,100)	(127,100)
Changes in model methodologies	(5,947)	(6,582)	6,141	(6,388)
Derecognition	(8,266)	(7,263)	(23,427)	(38,956)
Other movements	-	-	6,109	6,109
Balance as at the end of the financial year	110,166	171,483	361,064	642,713

Table 19b: Movement in Financing Allowance for Credit Losses as at 31 December 2022

RHB Islamic Bank	12-month	Lifetime ECL	Lifetime ECL	Total
	ECL	Not Credit	Credit	
	(Stage 1)	(Stage 2)	(Stage 3)	
	RM'000	RM'000	RM'000	RM'000
Balance as at the beginning of the financial year	170,709	252,606	183,176	606,491
Changes due to financial assets recognised in the opening balance that have been:				
- Transferred to 12-month ECL (Stage 1)	47,653	(42,848)	(4,805)	-
- Transferred to Lifetime ECL not credit impaired (Stage 2)	(5,976)	12,793	(6,817)	-
- Transferred to Lifetime ECL credit impaired (Stage 3)	(2,965)	(6,699)	9,664	-
	38,712	(36,754)	(1,958)	-
Changes in credit risk	(62,225)	174,676	148,855	261,306
Purchases and origination	26,322	5,017	5,256	36,595
Bad debts written off	-	-	(62,422)	(62,422)
Changes in model methodologies	(4,079)	(16,222)	(143)	(20,444)
Derecognition	(12,994)	(5,251)	(21,285)	(39,530)
Other movements	-	-	586	586
Balance as at the end of the financial year	156,445	374,072	252,065	782,582

RHB ISLAMIC BANK
BASEL II PILLAR 3 DISCLOSURES AS AT 31 DECEMBER 2023

7.0 MARKET RISK

Market risk is the risk of losses arising from adverse movements in market indicators, such as profit rates, credit spreads, equity prices, currency exchange rates and commodity prices. Under this definition, market risk will constitute:

- the profit rate and equity risks pertaining to financial instruments in the trading book; and
- foreign exchange risk and commodities risk in the trading and banking books.

The Bank transacts in financial instruments such as debt papers and derivative instruments such as futures, forwards, swaps, and options. Derivative instruments are contracts whose characteristics and value are derived from the underlying instruments that can be a reference to an underlying that may constitute of profit rates, exchange rates, debt paper, equity, indices and commodities.

The Group Market Risk Management within Group Risk Management is the working level that forms a centralised function to support senior management in the development of market risk framework, risk limits, operationalise the processes and implement measurement methodologies to ensure adequate risk control and oversight are in place. The main responsibility of managing market risk as the first line of defence remains at the respective business units.

The Group ALCO and GCRC perform a critical role in the management of market risk and support the board committees in the overall market risk management. The management committees meet regularly and is the forum where strategic and tactical decisions are made for the management of market risk; this includes the development of the Bank's market risk strategy, market risk management structure and the policies as well as measurement techniques to be put in place.

The Bank has established Group Trading Book Policy Statement, frameworks and risk limits as guidance for market risk management. These documents are reviewed regularly and/or upon change in significant event that has a material impact on policy compliance or regulatory changes.

Market Risk Measurement and Control

The Bank applies risk monitoring and assessment tools to measure trading book positions and market risk factors. Statistical and non-statistical risk assessment tools applied include Value-at-Risk (VaR), sensitivity analysis and stress testing.

The Bank adopts a systematic approach in managing these risks by types of instruments and nature of exposure. Market risk is primarily monitored and controlled via a structure of limits and triggers ie cut loss, VaR, trading and notional limit set in accordance with the size of positions and risk tolerance appetites. In addition, the Bank conducts periodic stress testing of its respective portfolios to ascertain market risk under abnormal market conditions.

Market Risk Monitoring and Reporting

For effective control of market risk, defined management action triggers and risk limits are established and actively monitored. Only authorised trading activities may be undertaken by the specific business units within the allocated limits. All trading positions are monitored independently on a daily basis and in accordance to the established escalation procedures and the key actions to be undertaken. Market risk exposure reports are presented to the senior management, relevant committees and the Board.

Hedging Activities

Hedging activities designated for hedge accounting are governed by the Group's Hedging Policy that prescribes the overall hedge activities that can be executed by the Bank and the subsequent control procedures such as effectiveness measurement and reporting to Group ALCO. Hedging instruments used to mitigate these risks include options, futures, forwards and swaps that are approved by the Board. Execution of the hedging is carried out by the relevant division through the Bank's treasury functions with the approval of Group ALCO.

RHB ISLAMIC BANK
BASEL II PILLAR 3 DISCLOSURES AS AT 31 DECEMBER 2023

Capital Treatment for Market Risk

The Bank applies the Standardised Approach to calculate market risk capital requirements in accordance with BNM's Guideline. The market risk-weighted assets and the corresponding capital requirements for the Bank as at 31 December 2023 and 31 December 2022 are shown in the tables below:

Table 20a: Market Risk-Weighted Assets and Minimum Capital Requirements as at 31 December 2023

RHB Islamic Bank					
<u>Market Risk</u>	Long	Short	Risk-	Minimum	
	Position	Position	Weighted	Capital	
	RM'000	RM'000	Assets	Requirements	
			RM'000	RM'000	
Profit Rate Risk	15,251,690	15,114,493	125,307	10,025	
Foreign Currency Risk	5,801	61,824	61,824	4,946	
Total			187,131	14,971	

Table 20b: Market Risk-Weighted Assets and Minimum Capital Requirements as at 31 December 2022

RHB Islamic Bank					
<u>Market Risk</u>	Long	Short	Risk-	Minimum	
	Position	Position	Weighted	Capital	
	RM'000	RM'000	Assets	Requirements	
			RM'000	RM'000	
Profit Rate Risk	13,712,284	13,659,288	109,266	8,741	
Foreign Currency Risk	6,956	61,224	61,224	4,898	
Total			170,490	13,639	

Note:

As at 31 December 2023 and 31 December 2022, RHB Islamic Bank did not have any exposure under equity position risk, commodity risk, inventory risk, options risk, and market risk exposure absorbed by PSIA.

8.0 LIQUIDITY RISK

Liquidity risk is the risk of the Group being unable to maintain sufficient liquid assets to meet its financial commitments and obligations when they fall due and transact at a reasonable cost. Liquidity risk also arises from the inability to manage unplanned decreases or changes in funding sources.

There are two types of liquidity risk, namely funding liquidity and market liquidity risk. Funding liquidity risk is the risk that the Group is unable to meet efficiently both expected and unexpected current and future cash flow and collateral needs without affecting either daily operations or the financial condition of the Group. Market liquidity risk is the risk that the Group cannot easily offset or eliminate a position at the market price because of inadequate market depth or market disruption.

The fundamental role of financial institutions in the maturity transformation of short-term deposits into long-term financing makes financial institutions inherently vulnerable to liquidity risk, both of institution-specific nature and that which affects financial markets as a whole. Guided by the Group's Liquidity Risk Policy, the Group manages the funding and market liquidity risk to ensure that banking operations continue to be uninterrupted under normal and stressed conditions. The key principles in Group's Liquidity Risk Policy includes maintaining financial market confidence at all times, protecting key stakeholders' interests and meeting regulatory liquidity requirements.

In addition, the Group's Liquidity Incident Management Plan Guideline stipulates guidance on managing liquidity crisis. Early warning indicators and triggers are identified, assessed and monitored to guard off adverse liquidity event. The corresponding remedial action plan is documented with clear roles and responsibilities from relevant business and functional units (including overseas operations). The escalation processes are defined to facilitate orderly and timely execution of liquidity management plans.

Group Asset and Liability Management (Group ALM) undertakes the responsibility of liquidity risk management, which involves establishing liquidity management policies and risk limits, identify and monitor risk exposures, perform stress testing, establish and review contingency funding plans. These processes are carried out regularly to ensure that they remain relevant in prevailing market conditions. Key liquidity risk ratio/measurement includes but not limited to Liquidity Coverage Ratio (LCR), Net Stable Funding Ration (NSFR), Top Depositor concentration ratio, Liquidity Crisis Trigger and available contingency funding sources.

The Group adopts and adheres to BNM liquidity standards on LCR (ensuring maintenance of adequate stock of unencumbered high quality liquid assets to survive the liquidity needs for 30 calendar day under liquidity stress condition) and NSFR (maintenance of sufficient stable funding sources over a time horizon of up to one year). The LCR and NSFR at RHB Banking Group level have been maintained at above regulatory limit of 100%.

The Group ALCO supports the board committees by performing the critical role in oversight of balance sheet risk, liquidity risk, and market risk. Group ALCO meets regularly to review and assess potential risk arising from rate of return risk in banking book, liquidity and market risk, deliberate business strategies and risk mitigation plans on the back of prevailing market condition and business landscape. In addition, Group ALCO reviews and approves profit rates for liabilities products as well as reference rates for financing products and services.

9.0 RATE OF RETURN RISK IN THE BANKING BOOK

Rate of return risk in the banking book refers to the risk of the Group's earnings and economic value of equity due to the adverse movements in benchmark rate. The risk may arise from the mismatches in the timing of repricing of assets and liabilities from both on and off-balance sheet positions in the banking book, changes in slope and shape of the yield curve, basis risk and optionality risk.

Rate of return risk in the banking book comprises:

- Re-pricing risk (mismatch risk) - Arises from timing differences in the maturity (for fixed-rate) and re-pricing (for floating-rate) of bank assets, liabilities, and off-balance sheet positions. While such re-pricing mismatches are fundamental to the business of banking, they can expose a bank's income and underlying economic value to unanticipated fluctuations as benchmark rates vary;
- Basis risk - Arises from imperfect correlation in the adjustment of the rates earned and paid on different instruments with otherwise similar re-pricing characteristics. When benchmark rates change, these differences can give rise to unexpected changes in the cash flows and earnings spread between assets, liabilities and off-balance sheet instruments of similar maturities or re-pricing frequencies;
- Yield curve risk - Arises when unanticipated shifts of the yield curve have adverse effects on the Bank's income or underlying economic value; and
- Embedded optionality risk - Arises primarily from options that are embedded in some banking book products (e.g. Mortgage/home financing products which allow early prepayment without penalty. All deposit which allows customers to withdraw its deposit at any time).

Earnings-at-Risk (EaR) and Economic Value of Equity (EVE) are used to assess rate of return risk in the banking book. They are computed based on the re-pricing gap profile of the banking book in accordance to BNM reporting requirement. Assets and liabilities are bucketed based on their remaining maturity or next re-price dates.

EaR measures the impact of benchmark rate on earnings of the bank, over a one-year horizon. Rate of return shock scenarios are determined based on balance sheet structure and repricing gap of the bank/reporting entity to assess the adverse impact to earnings.

EVE measures the impact of benchmark rates changes on the value of net cash flows (covering assets, liabilities and off-balance sheet positions) over the total capital of the bank. It is a long term economic measure in assessing the degree of rate of return rate exposure in relation to the total capital of the bank.

Guided by Group Rate of Return Risk in the Banking Book Policy, Group Asset and Liability Management (Group ALM) manages rate of return risk in banking book in adherence to established governance structure and process. Monthly EaR and EVE are measured, controlled and monitored against risk limits set. These are supplemented with projections to assess potential risk arising from changes in balance sheet structure and market environment. In addition, assessment of EaR and EVE are performed based on stressed scenarios on a regular basis. The Group evaluates the level of capital that it should hold, to ensure it is sufficient to cover rate of return risk in banking book. This is performed via internal capital assessment based on internal methodologies.

The Group ALCO supports the board committees by performing the critical role in oversight of balance sheet risk, liquidity risk and market risk. Group ALCO meets regularly to review and assess potential risk arising from rate of return risk in banking book, liquidity and market risk, deliberate business strategies and risk mitigation plans on the back of prevailing market condition and business landscape.

RHB ISLAMIC BANK
BASEL II PILLAR 3 DISCLOSURES AS AT 31 DECEMBER 2023

The impact of changes in benchmark rates to net earnings and economic value as at 31 December 2023 and 31 December 2022 are shown in the following tables:

Table 21a: Rate of Return Risk in the Banking Book as at 31 December 2023

RHB Islamic Bank	Impact on Position as at Reporting Period (100 basis points) Parallel Shift			
	Increase/(Decline) in Earnings		Increase/(Decline) in Economic Value	
	Impact based on	Impact based on	Impact based on	Impact based on
	+100 basis points	-100 basis points	+100 basis points	-100 basis points
Currency	RM'000	RM'000	RM'000	RM'000
MYR - Malaysian Ringgit	231,642	(231,642)	(278,968)	278,968
USD - US Dollar	(10,217)	10,217	11,140	(11,140)
Others ¹	(1,898)	1,898	1,451	(1,451)
Total	219,527	(219,527)	(266,377)	266,377

Table 21b: Rate of Return Risk in the Banking Book as at 31 December 2022

RHB Islamic Bank	Impact on Position as at Reporting Period (100 basis points) Parallel Shift			
	Increase/(Decline) in Earnings		Increase/(Decline) in Economic Value	
	Impact based on	Impact based on	Impact based on	Impact based on
	+100 basis points	-100 basis points	+100 basis points	-100 basis points
Currency	RM'000	RM'000	RM'000	RM'000
MYR - Malaysian Ringgit	197,433	(197,433)	(354,361)	354,361
USD - US Dollar	(11,885)	11,885	1,483	(1,483)
Others ¹	166	(166)	545	(545)
Total	185,714	(185,714)	(352,333)	352,333

Note:

1. Inclusive of GBP, EUR, SGD, etc
2. The EaR and EVE exposures are additive and do not take into account any correlation impact in the aggregation.
3. The earnings and economic values were computed based on the standardised approach adopted by BNM.
4. PSIA between RHB Islamic and RHB Bank which qualifies as a risk absorbent, is excluded from the computation of rate of return risk.

The impact to net earnings above represents financial assets and liabilities that have been prepared on the following basis:

- Benchmark rate sensitive assets and liabilities with residual maturity or re-pricing tenure of up to one year that is not captured in the trading portfolio are slotted into time bands based on the maturity or re-pricing tenure, whichever is earlier.
- A set of risk weights with its respective time band is used to project the applicable basis point benchmark rate change impact.
- For assets and liabilities without maturity, e.g. current and savings accounts, behavioural assumptions are applied while reporting these in the respective time-buckets.

10.0 OPERATIONAL RISK

Operational risk is the risk of loss resulting from inadequate or failed internal processes, people, systems and/or external events, which also includes IT, legal and Shariah non-compliance risk but excludes strategic and reputational risk. Operational risk may result in direct financial losses as well as indirect financial losses (e.g. loss of business and market share) due to reputational damage.

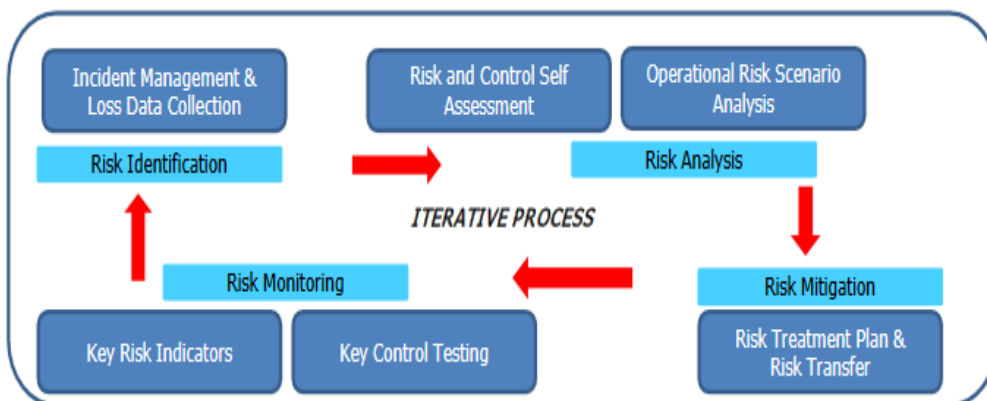
Operational Risk Management Function and Organisation

The Group Operational Risk Management within Group Risk Management has functional responsibility for the development of operational risk framework, policy and methodologies, and providing guidance and information to the business units on operational risk areas. Its responsibility also includes generating a broader understanding and awareness of operational risk issues at all levels in the Group. It also ensures that operational risks from new products, processes and systems are adequately managed and mitigated. The respective business and support units are primarily responsible for managing operational risk on a day-to-day basis.

Regular operational risk reporting is made to the senior management, respective committees and the Board that includes various operational risk information such as risk analysis, risk mitigation action plans, risk tools outcomes, risk appetite breaches, significant operational risk events and control failures, and lessons learnt. In addition, key operational risk incidents are reported to senior management daily. Such reporting enables senior management to be informed and deliberate on the identified operational lapses, promptness of corrective actions, and to ensure appropriate risk mitigation decision making and action plans are performed.

Operational Risk Management Processes and Tools

The Group establishes and uses the relevant operational risk tools and methodologies to support and ensure an effective operational risk management processes.



1. Incident Management and Data Collection – a process to report and record all operational risk incidents;
2. Risk and Control Self-Assessment – a methodology to build risk profile for each business/ function;
3. Operational Risk Scenario Analysis – a methodology to identify plausible risk scenarios for assessment;
4. Risk Treatment Plan – a register to assist business to monitor the action plans;
5. Key Risk indicators – a methodology for business to track and monitor significant risk areas associated to their business/ function; and
6. Key Control Testing – a methodology to assist business in performing a test on the controls to determine effectiveness.

RHB ISLAMIC BANK
BASEL II PILLAR 3 DISCLOSURES AS AT 31 DECEMBER 2023

Risk Mitigation and Controls

Risk mitigation strategies are used to minimise risk to an acceptable level and aim to decrease the likelihood of an undesirable event and the impact on the business, should it occur. The control tools and techniques, amongst others, are as follows:

- **Strengthening internal controls**
Internal controls (i.e. control environment, risk assessment, control activities, information and communication, and monitoring) are designed to commensurate operational risk exposures faced by the Group. The Group monitors and regularly evaluates its internal control systems to ensure that they are operating effectively and to take account of changing internal and external conditions.
- **Business Resilience and Continuity**
To mitigate the impact of unforeseen operational risk events, the Group has on-going and actively managed Business Continuity Management (BCM) programme for its major critical business operations and activities at the Head Office, data centre, and branches' locations. There are ongoing continuous improvement initiatives to build operational resilience to ensure sustainability of critical services. The BCM programme is subject to regular testing to validate the adequacy and preparedness of all resources to support critical and essential services in the event of disruption. BCM Programme is under the responsibility of the Group Business Continuity Management Department. The Board of Directors has an oversight function through the Board Risk Committee and Group Capital and Risk Committee (GCRC). The Group Business Continuity Committee, which reports to GCRC, is the committee that oversees the Group's business continuity framework, policies, budget and plans.
- **Fraud Risk Management**
Robust fraud risk management processes to manage threats from external sources and internally, are in place guided by the Group Fraud Risk Management Policy. The Group constantly assesses and monitors fraud risk to ensure consistent organizational behavior through the development, implementation, and regular review of fraud prevention, detection, and response strategies.
- **Outsourcing**
Due to the need to outsource for cost and operational efficiency, policy and guidelines are put in place to ensure that the risks arising from outsourcing activities are adequately identified, assessed and managed prior to entering into any new arrangements and on an on-going basis.
- **Insurance/Takaful Management**
The Group considers risk transfer by means of insurance/Takaful to mitigate operational risk. The Group has a programme of insurance/Takaful designed to reduce its exposure to liability and to protect its assets. Insurance / takaful arrangement is used to complement the management of operational risk and not as a substitute for a sound internal control environment.

Technology Risk

Technology Risk refers to the business risk associated with the use, ownership, operation, involvement, influence and adoption of Information Technology (IT) within the Group.

The Group recognises the risk arising from the advancement and reliance upon information technology to support business operations through the deployment of advance technology and online systems to provide customers with convenient and reliable products and services. The Group's Technology and Cyber Risk Management Framework ensures that a governance structure is in place for the identification, assessment and management of technology risks within existing IT operations as well as prior to deployment of applications and systems for both internal and external customers.

To ensure that the residual risk is acceptable, the Group has established Technology and Cloud Risk Assessment processes to comprehensively identify and assess relevant risks and corresponding controls for IT and digitalisation initiatives.

RHB ISLAMIC BANK
BASEL II PILLAR 3 DISCLOSURES AS AT 31 DECEMBER 2023

Cyber Risk

Cyber Risk refers to threats or vulnerabilities emanating from the connectivity of internal technology infrastructure to the Internet. This is an inherent risk associated to the industry moving towards the Internet as a channel for the delivery of banking services. The Group recognises the risks associated to online channels and as part of the mitigation shall continuously identify suitable security devices to be deployed and ensure sufficient resources with the right skill sets are allocated to manage this risk.

The Group also subscribes to various threat intelligence services to obtain latest information on cyber threat incidence which can be used for the risk mitigation. To further provide assurance that the Internet facing application systems are secured, the Group engages reputable IT security service providers to perform periodic penetration testing where weaknesses detected shall be duly resolved with attestation from external consultants. To further strengthen the controls, Red Team and compromise assessment activities are performed regularly to test the effectiveness of the implemented safeguards. Phishing simulation exercises are also carried out periodically to maintain staff vigilance and increase awareness on such social engineering cyberattacks.

New Product and Services Approval Process

The Group has established a Group Policy on Product Development & Approval and Group Guideline on Product Development & Approval which governs the risk management of new products, services, or significant changes thereto. The responsible units have a duty to assess the operational risk for new product launches and/or significant changes in product features or related processes and working systems, as well as to ensure that operational risk is at an acceptable level at all times.

Legal Risk

Legal risk is part of operational risk. It can arise from unenforceable, unfavourable, defective or unintended contracts; lawsuits or claims; developments in laws and regulations, or non-compliance with applicable laws and regulations. Business units work together with the Bank’s legal counsel and external legal counsel to ensure that legal risk is effectively managed.

Capital Treatment for Operational Risk

The Bank adopts the Basic Indicator Approach for the calculation of regulatory operational risk capital requirements. The operational risk-weighted assets and the corresponding capital requirements for RHB Islamic Bank as at 31 December 2023 and 31 December 2022, are shown below:

Table 22: Operational Risk-Weighted Assets and Minimum Capital Requirements

<u>Operational Risk</u>	RHB Islamic Bank	
	2023	2022
	RM'000	RM'000
Risk-Weighted Assets	3,387,790	3,114,515
Minimum Capital Requirements	271,023	249,161

**RHB ISLAMIC BANK
BASEL II PILLAR 3 DISCLOSURES AS AT 31 DECEMBER 2023**

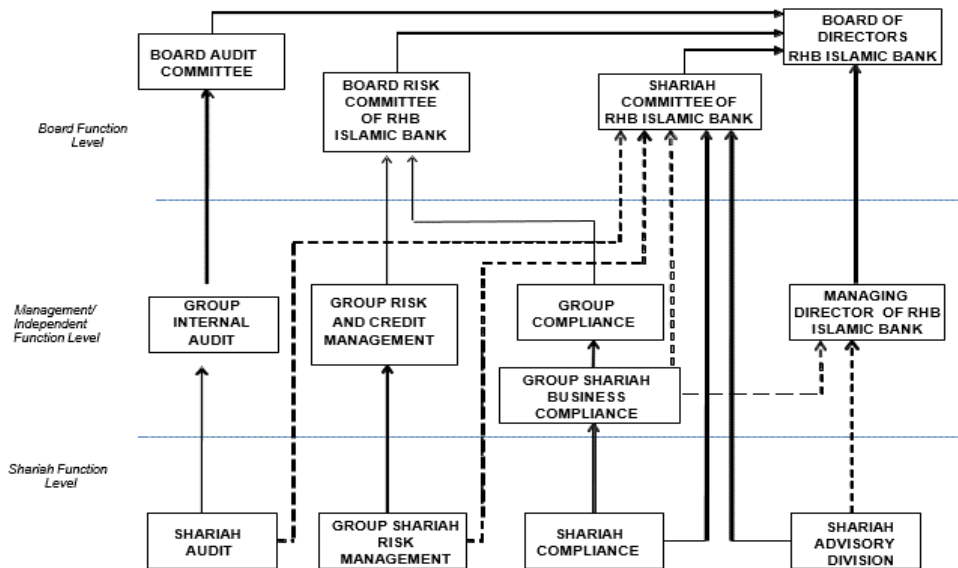
11.0 SHARIAH NON-COMPLIANCE RISK AND GOVERNANCE

Shariah non-compliance risk is the risk of legal or regulatory sanctions, financial loss or non- financial implications including reputational damage, which RHB may suffer arising from failure to comply with the rulings of the Shariah Advisory Council (SAC) of local regulatory bodies (such as the SAC of the BNM for Malaysia operations), standards on Shariah matters issued by the local regulator, or decisions or advice of the Shariah committee/adviser appointed by respective RHB entities.

A Shariah Governance Framework has been developed with the objective of governing the entire Shariah compliance process within Islamic banking operations, and to:

- Ensure that the planning, development, and implementation of the Islamic products, services and conduct of business are in accordance with Shariah principles;
- Ensure that the operations do not contravene any of the Shariah principles and authorities' regulations related to the Shariah; and
- Act as a guide on the expectations to all personnel engaged in the Islamic business activities; to ensure that all such functions are based on the Shariah principles, practices and prudence.

The reporting structure of Shariah governance is as follows:



The Shariah Committee of RHB Islamic Bank (SCR) was established under BNM's Shariah Governance Policy Document.

The main duties and responsibilities of the SCR are to provide objective and sound advice to the Bank on Shariah matters in relation to Islamic business and operations; deliberating, affirming, and addressing any Shariah non-compliance event; as well as to provide written Shariah opinion on new products and RHB Islamic Bank's financial statements. The other entities within the RHB Banking Group without internal Shariah committee established have given the mandate to the SCR to advise on the Shariah matters, which are ultimately governed by the respective entities' board of directors.

RHB ISLAMIC BANK
BASEL II PILLAR 3 DISCLOSURES AS AT 31 DECEMBER 2023

On a functional basis, the RHB Banking Group Islamic businesses are supported by Shariah Advisory Division, Group Shariah Risk Management, Shariah Compliance Centre of Expertise (CoE) and Shariah Audit.

The Head of Shariah Advisory Division reports functionally to the SCR and administratively to the Managing Director of RHB Islamic Bank. The main duties and responsibilities of Shariah Advisory Division include, but not limited to, conduct reviews on Islamic products and services; provide internal Shariah advisory support to the management in its daily business and operational matters; assist the SCR in elaborating and discussing on pertinent Shariah issues; provide in-depth research on competitive analysis in order to assist the SCR's decision-making process; ensure the internal Shariah governance, the internal process flow and policies, and Shariah approval processes are well managed and maintained in an efficient manner; ensure the Bank is in compliance with the highest standard of Shariah governance as set by BNM; serve as the secretariat of the SCR and to act as the mediator between the management and the SCR; oversee the computation and distribution of zakat and funds to be channelled to charity; and to represent the management in any Shariah related matters.

The key role and responsibilities of Group Shariah Risk Management is to facilitate the identifying, measuring, monitoring and controlling of Shariah non-compliance risks inherent in the Islamic business and operations to mitigate any potential Shariah non-compliance events. Group Shariah Risk Management also performs independent assessment and provides support and reporting to the senior management committees relating to Shariah non-compliance risk.

Shariah Compliance CoE conducts review and assists the SCR in providing opinions from Shariah perspective in relation to the status of Shariah compliance of products, services and operations of the Islamic business operations. Shariah Audit provides an independent assessment on the adequacy and effectiveness of the Bank's internal control, risk management systems, governance processes including the overall compliance of the Bank's operations, business, affairs and activities with Shariah requirements.

Any incidences of Shariah non-compliance decided by the SCR are reported to the GCRC, BRC-i, BRC, the Board of Directors of respective entities in RHB Banking Group and the BNM (for Malaysia operations). Remedial actions may include the immediate termination of the Shariah non-compliant products or services and de-recognition of any Shariah non-compliant income.

There were nil Shariah Non-Compliance events reported in 2023.

RHB ISLAMIC BANK
BASEL II PILLAR 3 DISCLOSURES AS AT 31 DECEMBER 2023

12.0 INVESTMENT ACCOUNT

Investment Account (IA)

The Group via RHB Islamic Bank offers two types of Investment Account (IA) namely, Restricted Investment Account (RIA) which refers to an IA where the Investment Account Holder (IAH) provides a specific investment to RHB Islamic Bank, and Unrestricted Investment Account (URIA) which refers to an IA where the customer provides RHB Islamic Bank with a mandate to make the ultimate investment decision without specifying any particular restriction or condition. Each IA product under the RIA and URIA must be structured based on the application of the approved Shariah contract.

RHB Islamic Bank has put in place the necessary risk management framework, policies and guidelines as well as operational manuals and procedures in ensuring the interests of the IAH are protected. The operationalisation of the RIA and URIA products are governed by RHB Islamic Bank's governance component, amongst others:

1. Shariah Governance Framework;
2. RHB Islamic Bank Investment Account Pricing Framework
3. RHB Islamic Bank Investment Account Policy;
4. RHB Islamic Bank Investment Account Guideline;
5. Profit Sharing Investment Account-i (PSIA-i) Operations Manual;
6. Restricted Investment Account-i (RIA-i) Operations Manual; and
7. Treasury Operations Manual.

The roles and responsibilities of various parties in ensuring the proper management of the IAH's funds are described as follows:

- Board of Directors committees - provide the strategic directions and risk appetite for the Bank, approve relevant governance structure, objectives and policy as well as providing oversight on the risk management and overall control activities;
- Shariah Committee - oversee and endorse the overall management and operations of the investment account business to be in compliance with Shariah, assess the work carried out by Shariah Advisory, Shariah Risk and Shariah Review on the investment account operations, and provide opinion on Shariah compliance of the IAs and the related operations;
- Senior management - formulate and implement investment strategies, internal control and risk management system, including profit distribution policy and valuation policy, in line with the investment objectives;
- GALCO - approve the structure, pricing and terms of IA based on the approved IA product;
- Other control and support functions - Group Treasury, Strategic Business Group, Group Finance, Group Shariah Business, Group Risk Management, Group Compliance and Group Internal Audit providing the necessary operational functions and independent assessment.

The governing principles as set out in the IA Policy of RHB Islamic Bank include policies related to asset allocations of the IA products which are translated into guidelines and operational document (standard manuals), which help senior management in making the necessary decision during the process. The related policy statements are as below:

1. The management of the assets and funds of the investment accounts must be managed with due care to the rights and safeguarding the interests of the investors.
2. The underlying assets, investment funds and transaction of the various investment accounts must be separated from other funds and assets managed and or owned by the Bank.
3. Transactions between the investment accounts and the Bank, if any, must be conducted in a transparent manner and on an arm's length basis.
4. The records for each investment account must be maintained separately and subjected to the valuation methodology established in accordance with the relevant accounting standards.
5. RHB Islamic Bank shall not implement profit smoothing practices or techniques to manage the Displaced Commercial Risk. The relationship and terms between the parties must be clearly stated in the terms and conditions of each investment account.
6. The Bank shall develop a list of permissible direct expenses that must be approved by the Board and the Shariah Committee. The list must be reviewed at least annually.

RHB ISLAMIC BANK
BASEL II PILLAR 3 DISCLOSURES AS AT 31 DECEMBER 2023

Restricted Investment Account (RIA)

Currently RHB Islamic Bank offers the following products under the RIA category :

1. Profit Sharing Investment Account-i (PSIA-i) which uses Mudharabah as the underlying Shariah contract (counterparty restricted to RHB Bank only); and
2. Restricted Investment Account-i (RIA-i) using the Mudharabah contract for retail and non-retail investors.

The products are offered to investors having the following characteristics:

1. Risk appetite match with investment objectives.
2. Require investment that comply with Shariah requirements.
3. Are willing to accept potential risk of losing the capital invested in order to achieve potential higher profit than normal term deposit rate.
4. IAH must be a legal entity that has legal capacity to enter into the contract.

Unrestricted Investment Account (URIA)

RHB Islamic Bank currently offers the Wakalah Money Market Investment Account-i (WMMIA-i) using the Wakalah bi al-Istithmar contract. This product is offered to corporate investors (resident) having the following characteristics:

1. Risk appetite match with investment objectives.
2. Require investment that comply with Shariah requirements.
3. Are willing to accept potential risk of losing the capital invested in order to achieve potential higher profit than normal term deposit rate.
4. IAH must be a legal entity that has legal capacity to enter into Wakalah bi al-Istithmar contract.

Table 23: Disclosure on Profit Sharing Investment Account

RHB Islamic Bank

Unrestricted Investment Account (URIA)

	2023	2022
	%	%
Return on Assets (ROA)	8.93	7.58
Average Net Distributable Income	19.88	7.49
Average Net Distributable Income Attributable to the Investment Account Holder (IAH)	4.03	3.00
Impaired assets funded by URIA	RM'000	RM'000
ECL Stage 1 provisions funded by URIA	299	12,218
ECL Stage 2 provisions funded by URIA	8	496
ECL Stage 3 provisions funded by URIA	16	1,465
	67	3,778

Note:

1. Return on Assets refers to total gross income/average amount of assets funded by URIA.
2. Average Net Distributable Income refers to total average net distributable income/ average amount of assets funded by URIA.

13.0 COUNTRY CROSS-BORDER RISK

Country cross-border risk is the risk that the Group faced mainly involving multiple legal requirements in various jurisdictions which in turn result in compliance with different sets of standards. Some of these requirements may be unique to a jurisdiction or may be incompatible with each other, including those with respect to fiduciary duties, securities laws requirements and deal structure.

Additionally, political considerations such as the country's national security interest, offering policies on foreign investment, anti-trust and labor and employment policies may also require careful consideration. Due to this, there is a need for the Group to set out the policies and underline the expected conduct when venturing into such business activity.

This is to safeguard the Group's interest and reduce the compliance risk associated with the overseas business activities. In addition, the Bank is also guided by the Country Risk limit, to manage the credit concentration risk arising from changes in the country's business environment where it has exposure in.

14.0 REPUTATIONAL RISK

Reputational risk is defined as the risk that negative publicity regarding the conduct of the Bank or any of the entities within the Group, and its business practices or associations, whether true or not, will adversely affect its revenues, operations or customer base, or require costly litigation or other defensive measures. It also undermines public confidence in the Group, affecting the share price.

Reputational risk in the Group is managed and controlled through codes of conduct, governance practices and risk management practices, policies, procedures and training. The Group has developed and implemented the Group Reputational Risk Management Policy which outlines the core principles to manage reputational risk.

15.0 FORWARD LOOKING STATEMENTS

This document could or may contain forward looking statements that are based on current expectations as well as assumptions or anticipation of future events. These forward looking statements can be identified by the fact that they do not relate only to historical or current facts, and often use words such as anticipate, target, expect, estimate, intend, plan, believe, will, may, should, would, could or other words of similar expressions.

Undue reliance should not be placed on any of such statements. By their nature, forward looking statements are subject to risks and uncertainty because they relate to future events and circumstances, including, but not limited to domestic and global economic and business conditions, the effects of continued volatility in the credit markets, market-related risks such as changes in profit rates and exchange rates, changes in regulation, and future business combinations or dispositions. As a result, the Bank's actual future results may differ materially from the plans, goals, and the expectations contained in the forward looking statements.

The Bank undertakes no obligation to revise or update any forward looking statements contained in this document, regardless of whether these statements are affected as a result of new information, future events or otherwise.

RHB ISLAMIC BANK
BASEL II PILLAR 3 DISCLOSURES AS AT 31 DECEMBER 2023

Table 24: Glossary of Terms

A-IRB	Advanced Internal Ratings-Based Approach
BCC	Board Credit Committee
BCM	Business Continuity Management
BNM	Bank Negara Malaysia
Board	Board of Directors
BRC	Board Risk Committee
BRC-i	Board Risk Committee of RHB Islamic Bank
CAFIB	Capital Adequacy Framework for Islamic Banks
CCB	Capital Conservation Buffer
CCR	Counterparty Credit Risk
CCyB	Countercyclical Capital Buffer
CET	Common Equity Tier
CoE	Centre of Expertise
CRM	Credit Risk Mitigation
DFIs	Development Financial Institutions
EAD	Exposure at Default
EaR	Earnings-at-Risk
ECAIs	External Credit Assessment Institutions
EL	Expected Loss
EUR	Euro Dollar
EVE	Economic Value of Equity
F-IRB	Foundation Internal Ratings-Based Approach
Fitch	Fitch Ratings
GBP	Pound Sterling
GCC	Group Credit Committee
GCG	Group Credit Guidelines
GCPM	Group Credit Procedures Manual
GCRC	Group Capital and Risk Committee
Group ALCO	Group Asset and Liability Committee
Group ALM	Group Asset and Liability Management
ICAAP	Internal Capital Adequacy Assessment Process
IMLDC	Incident Management and Loss Data Collection
IRB Approach	Internal Ratings-Based Approach
ISDA	International Swaps and Derivatives Association
KCT	Key Control Testing
KRI	Key Risk Indicators
LCR	Liquidity Coverage Ratio
LGD	Loss Given Default
MARC	Malaysian Rating Corporation Berhad
MATs	Management Action Triggers
MDBs	Multilateral Development Banks
MFRS 9	Malaysian Financial Reporting Standards 9
Moody's	Moody's Investors Services
MYR	Malaysian Ringgit
NSFR	Net Stable Funding Ratio
OTC	Over-the-Counter
PD	Probability of Default
PSIA	Profit Sharing Investment Accounts
R&I	Rating and Investment Information, Inc
RAM	Rating Agency Malaysia
RCSA	Risk and Control Self-Assessment
RM'000	Malaysian Ringgit in nearest thousand
RSME	Retail Small and Medium Sized Enterprises
RWA	Risk-Weighted Assets
SA	Standardised Approach
SCR	Shariah Committee of RHB Islamic Bank
SGD	Singapore Dollar
S&P	Standard & Poor's
SMEs	Small-and medium-sized enterprises
USD	US Dollar
VaR	Value-at-Risk